

ORACLE



CLUB UTILISATEURS
DE SOLUTIONS ORACLE

Bienvenue à la communauté Cloud EPM Clients

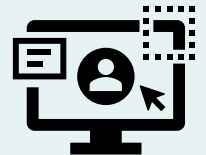
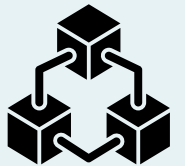
7 juillet 2022



Agenda



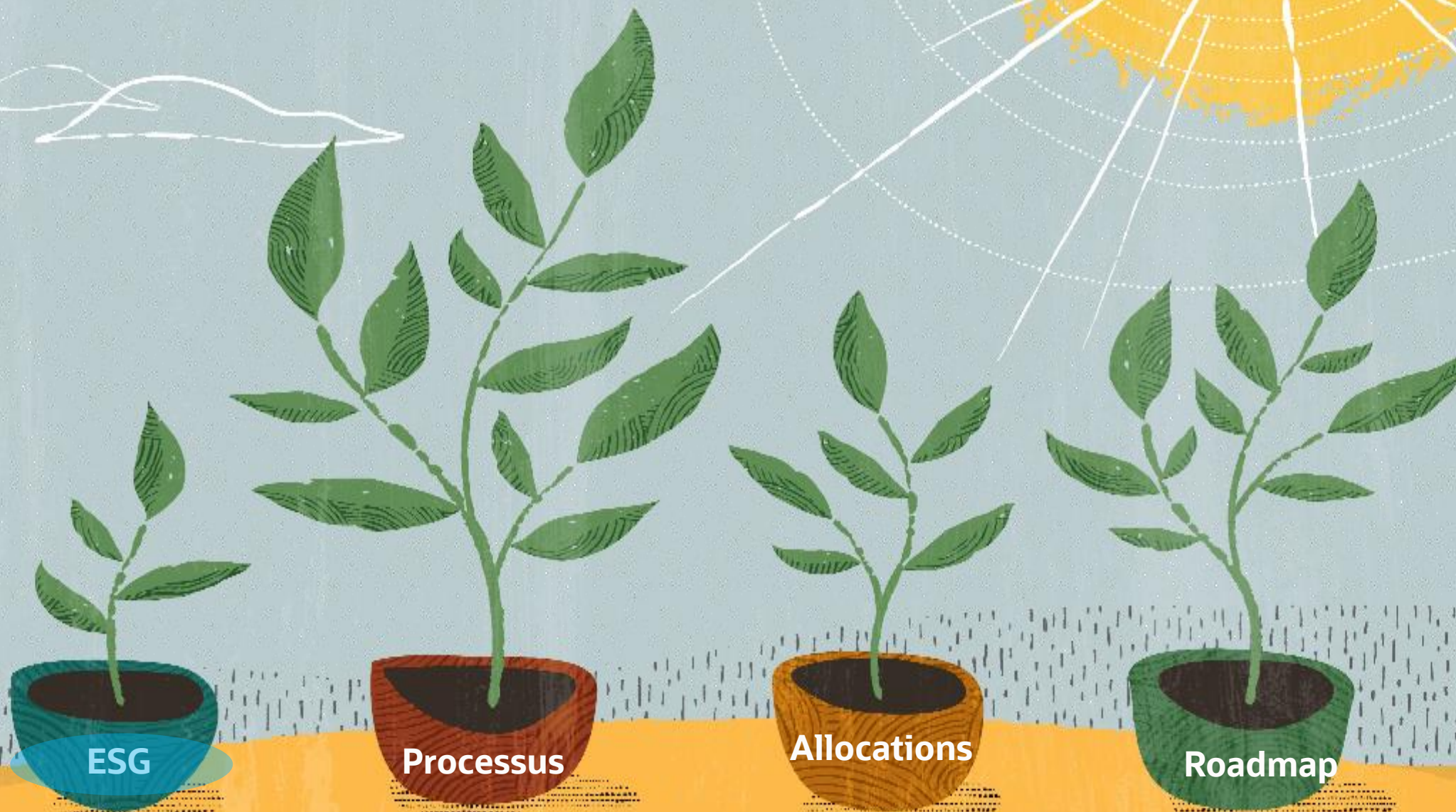
- Nouveautés & Roadmap
- Retour d'expérience GEFCO



L'équipe Consultants Solution EPM Oracle France



Les innovations récentes



ESG

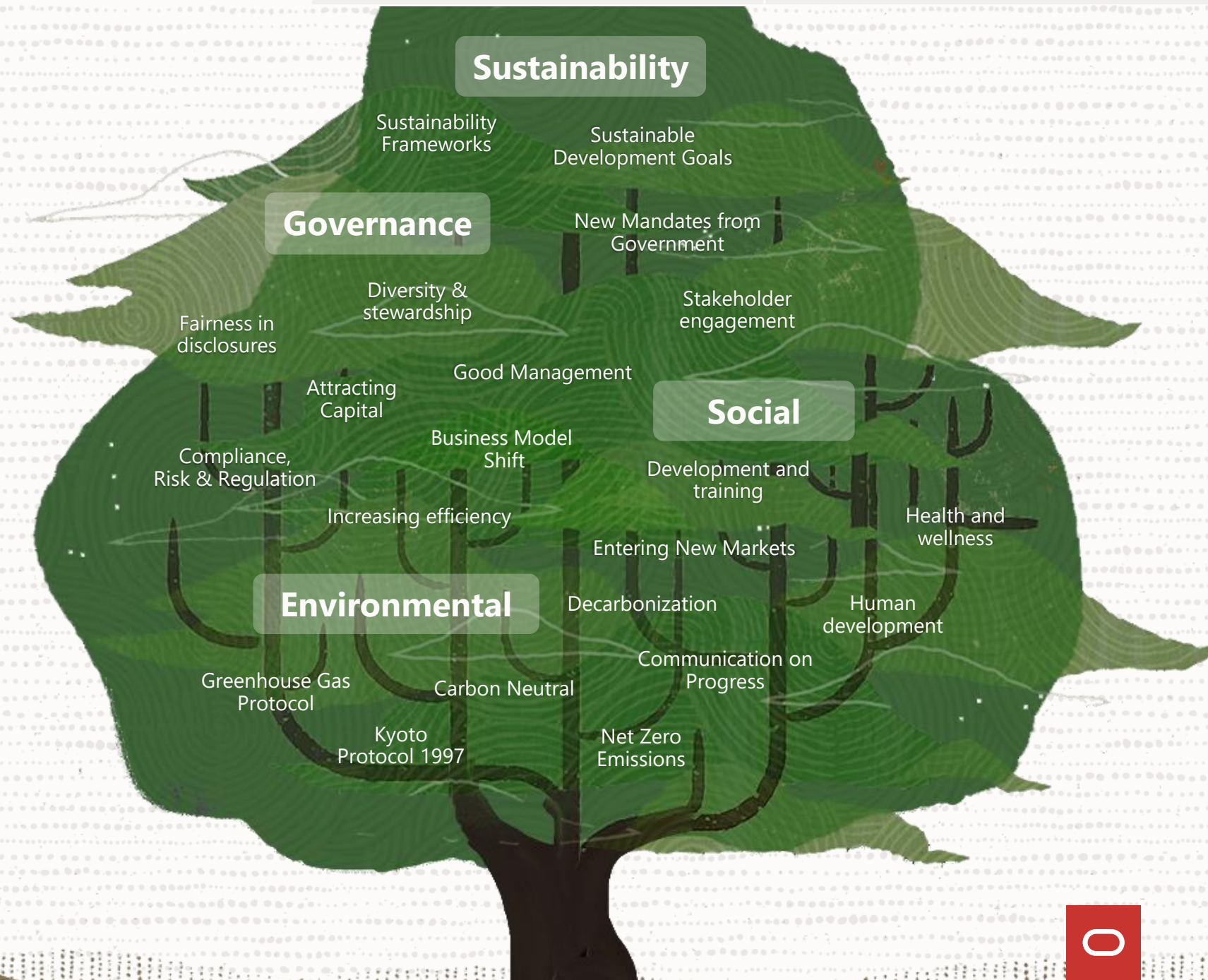
Processus

Allocations

Roadmap

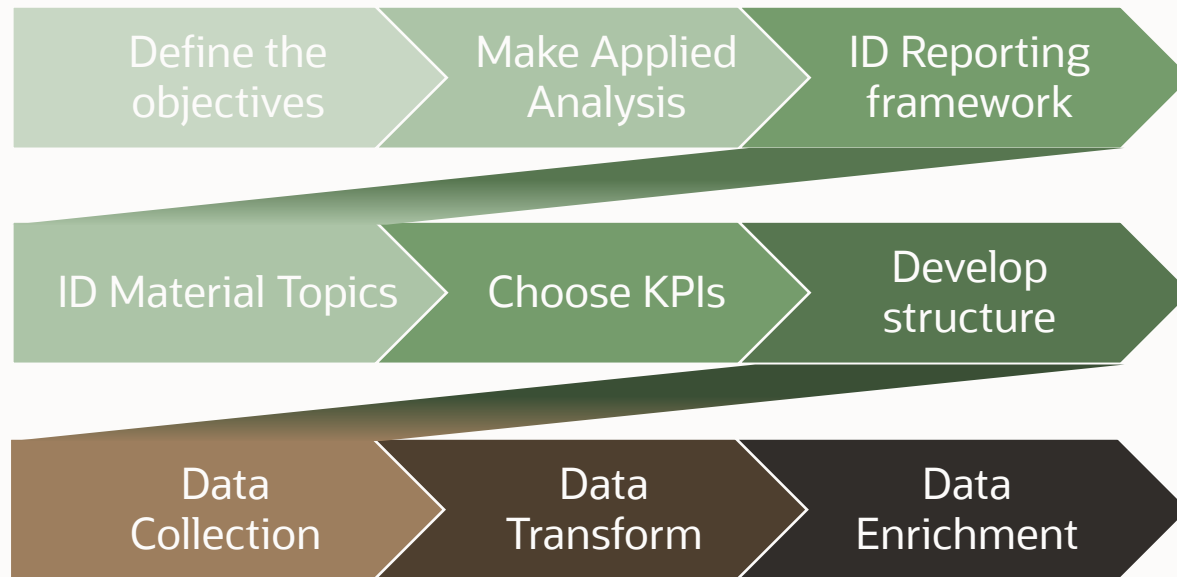
Building a more sustainable future

Using technology as a force for good



Reporting on Progress

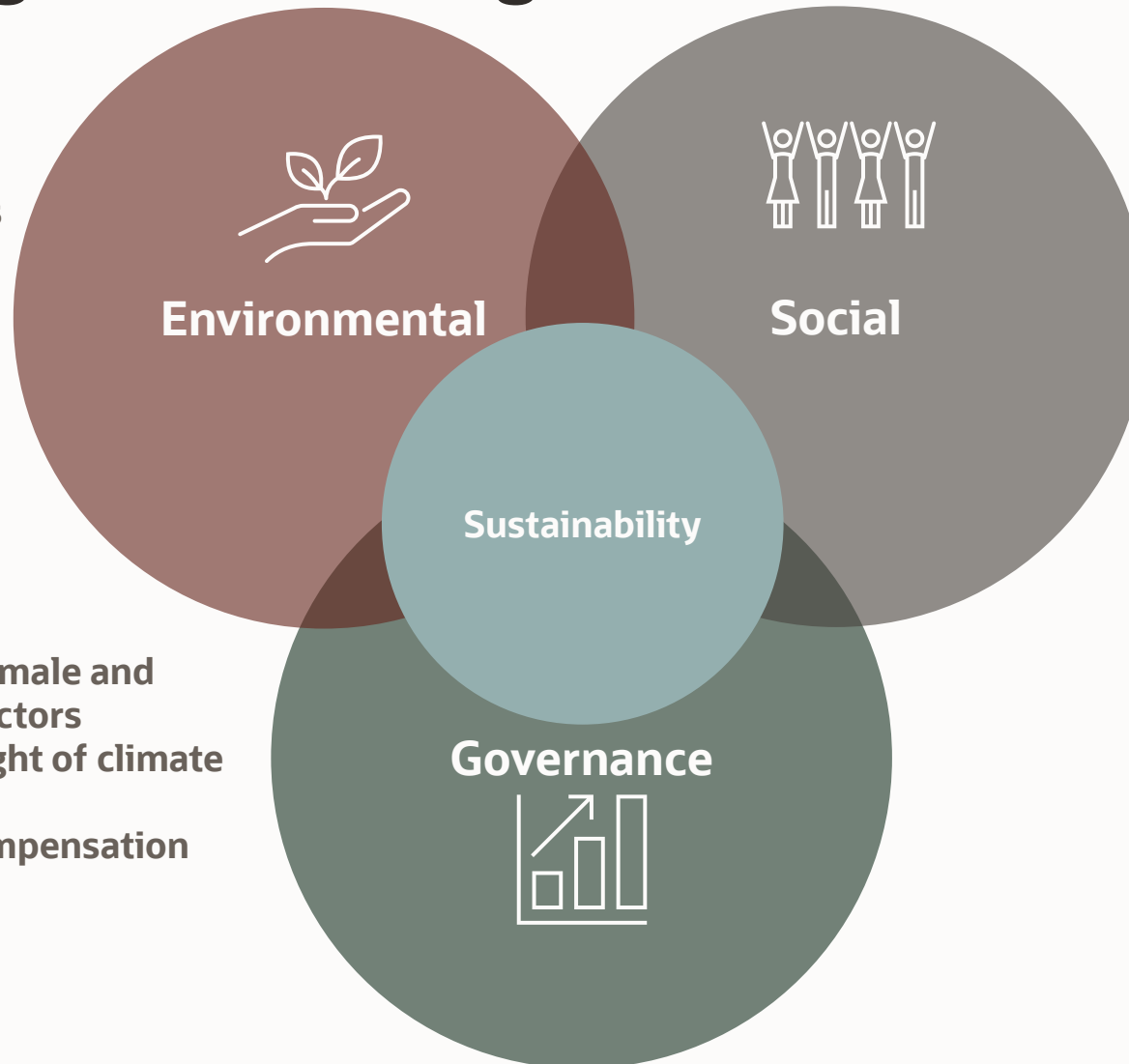
Challenges along the way



ESG Reporting is far reaching

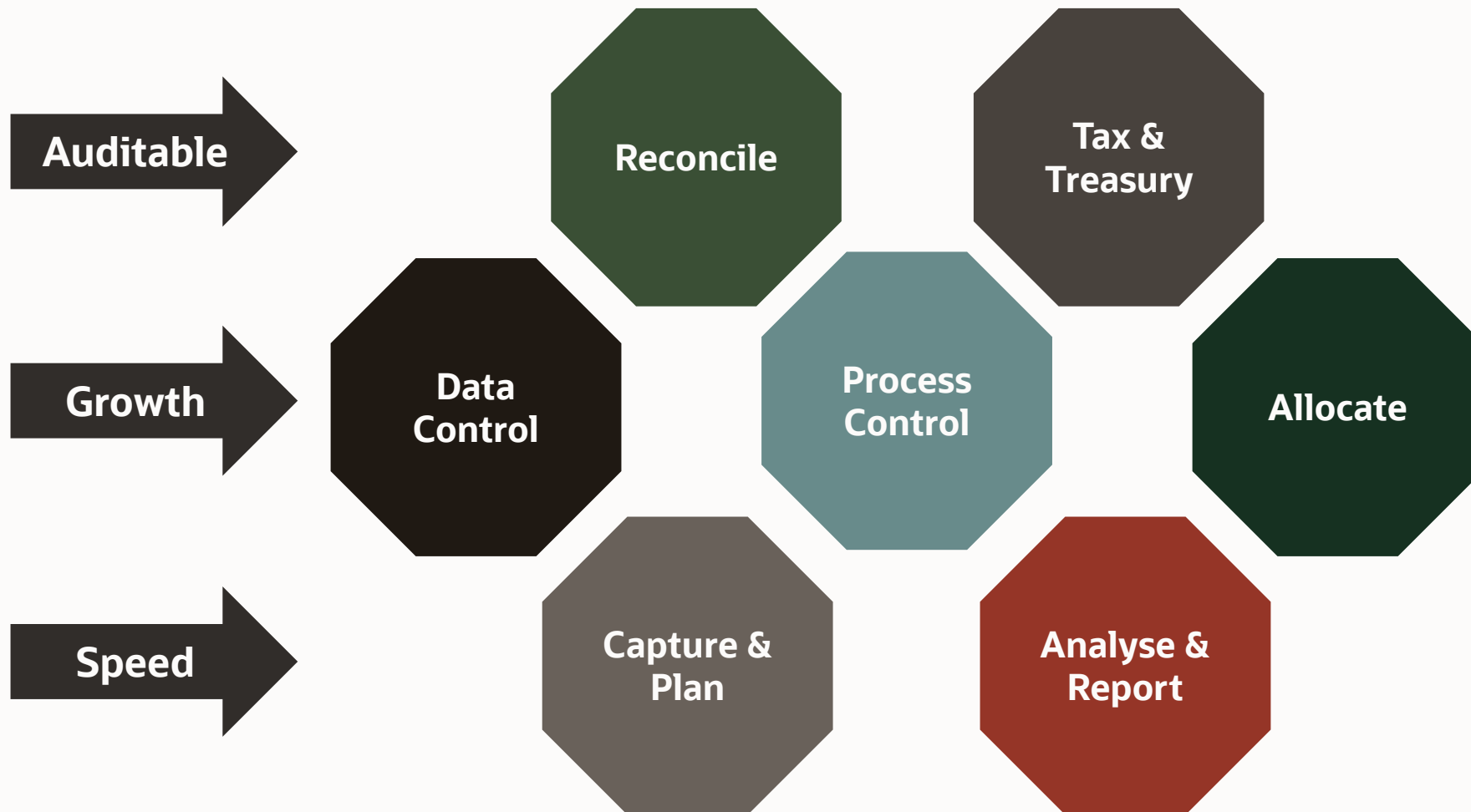
- Carbon emissions
- Water intensive operations
- Energy used in facilities
- Product sustainability
- Earnings sensitivity
- Tons of toxic waste
-

- Number of female and minority directors
- Board oversight of climate issues
- Executive compensation
-



- Employee wellness initiatives
- Digital upskilling
- Median hourly gender pay gap
- Employee retention
- Gender and racial/ethnic representation
- Supplier labour risks
-

ESG Reporting will require an evolutionary approach



Complete:

- Automated reconciliations
- Auditability & audit reporting
- Tax reporting & planning impacts



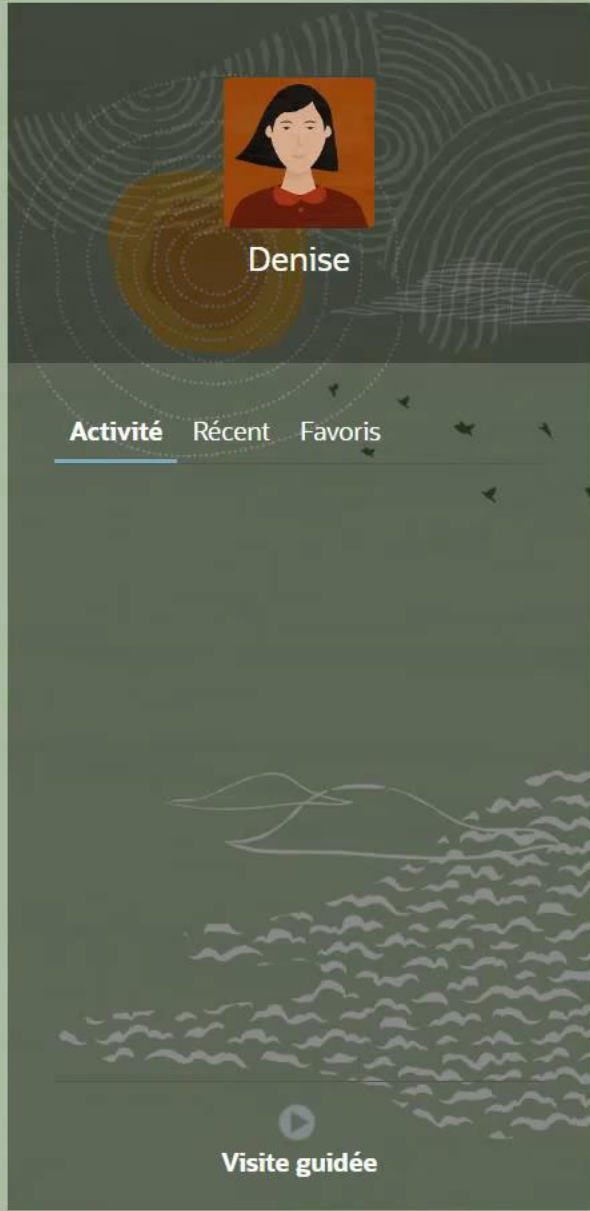
Build and improve:

- Control data, governance & meta-data
- Granularity, frequency & automation
- Process control and improvement
- Allocations across BU's/LE's



Provide a foundation and start point:

- Collect data
- Convert and smooth
- Plan and predict
- Report, review and refine



Denise

Activité Récent Favoris

Visite guidée

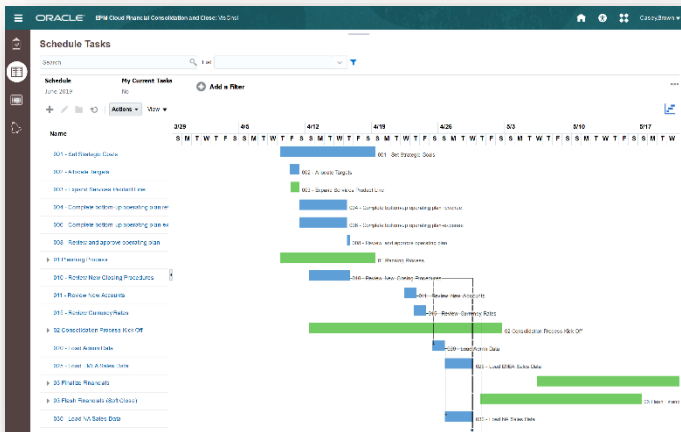
- GRI Input
- Benchmark
- Dashboards
- Reports
- IPM
- Application
- Outils
- Tâches



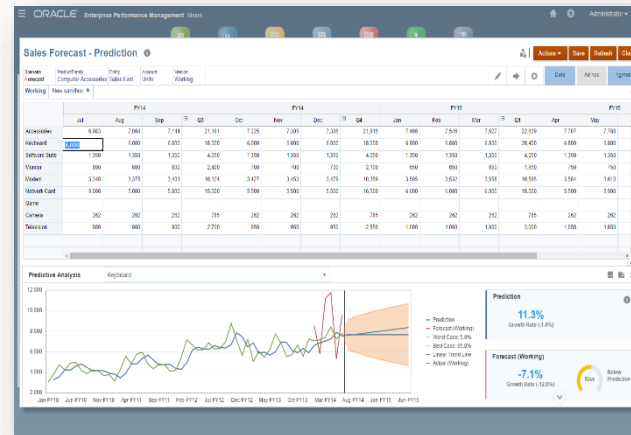
Oracle Cloud EPM | Your Sustainable Destiny

Collect, Plan, and Report

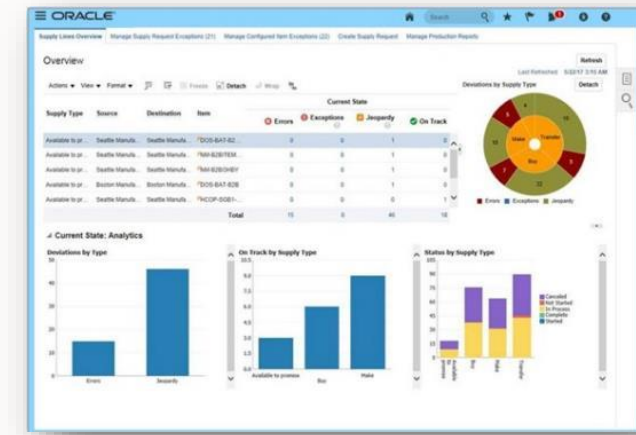
Collect, convert and aggregate your ESG KPI's in one central store. Manage accountability and status across your ESG reporting and planning cycles to cover off all stakeholders



Plan for and track your performance against all your environmental, social and governance targets with an integrated, flexible, data driven planning platform.



Monitor your ESG Metrics on an interactive dashboard, perform ad-hoc analysis and add narrative and data in report packages with the robust reporting capabilities

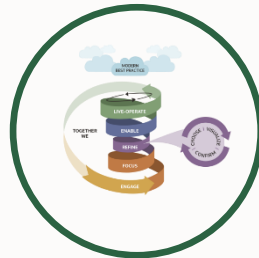


Next Steps

Sustainability Journey

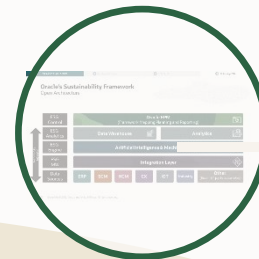
Implement
ESG execution plan

Benefits focused delivery



Create
ESG roadmap

Learning from your sustainability programme experience



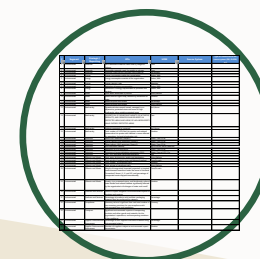
Implement
ESG Dashboard

Gain control of your Sustainability destiny



Schedule
ESG workshop

Agree Sustainability KPI's and data sources



Les innovations récentes



Oracle EPM Cloud

Task Manager (planning 22.04)



Oracle EPM Task Manager vous permet de :

- **Définir** les tâches et le calendrier associé
- **Automatiser** les processus métier
- **Avertir** les utilisateurs par e-mail
- **Surveiller** l'état des processus métier à partir d'un tableau de bord
- **Agir** rapidement pour corriger les erreurs et les retards

Oracle EPM Cloud Task Manager

Name	4/26	5/3	5/10	5/17
01 - Consolidation Process Kick Off				
005 - Review New Closing Procedures				
010 - Review New Accounts				

The screenshot displays the Oracle EPM Cloud Task Manager interface. The main view is titled "Overview 2020 Apr". It shows a summary of task status: 20 Open Tasks, 20 Late, and 0 On Time. A large red circle highlights the "Late" status. Below this, a legend indicates "Late" (red square) and "On Time" (blue square). To the right, the "Schedule Tasks" section shows a bar chart with 3 Complete (green) and 26 Incomplete (yellow) tasks. Below that, the "Supplemental Data" section shows 0 Complete (yellow) and 3 Incomplete (yellow) tasks. A sidebar on the left lists various tasks with their IDs. A calendar view is visible on the right side of the interface.



Administrator

Forecast mensuel

Bonjour à tous,

A compter du 2 février 2022, nous vous demandons de **mettre à jour votre forecast** sur la

Activité Récent Favoris

- 1 Annonces
- 1 Mes tâches ouvertes

 Visite guidée



Tâches



Reporting



Budget



Forecast



Données



Rapports



Application



Outils



IPM



Infothèque



Orchestrer le pilotage de la clôture

Challenges

- Harmoniser les processus et modes opératoires pour la clôture afin de fiabiliser et réduire les délais de clôture. Mettre en place une solution pilotée et répondant aux contraintes réglementaires internes et des CAC
- Centraliser et historiser dans un seul outil l'ensemble des documents et sécuriser les accès et la disponibilité de l'information pour le management
- Amélioration de la fluidité et traçabilité des échanges
- Sécuriser l'intégration de nouveaux collaborateurs / Monitorer la reprise des dossiers entre les collaborateurs

Notre réponse

- Une solution Core Model, une solution commune (outil et processus) facilitant :
 - Les déploiements dans de nouvelles entités
 - L'adoption par les utilisateurs, la communication entre les métiers, le transfert de compétences
- Une solution digitale, fiable, auditable, facilitant la traçabilité des données
- Sur les périmètres du pilotage de la clôture

Les innovations récentes





GEODIS
KEEP RISING

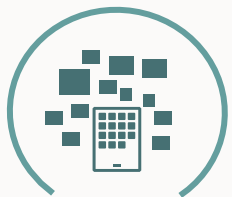
78%

Considèrent l'exactitude des informations sur les coûts comme un domaine à améliorer

Source: Deloitte "Cost Transparency: Helping Finance Create Business Value"

Éliminer le mystère des processus d'allocation

Profitability and Cost Management dans Oracle Cloud EPM



**Refacturation
de services
partagés**



**Calcul de
prix de
transfert**



**Analyse de
rentabilité**



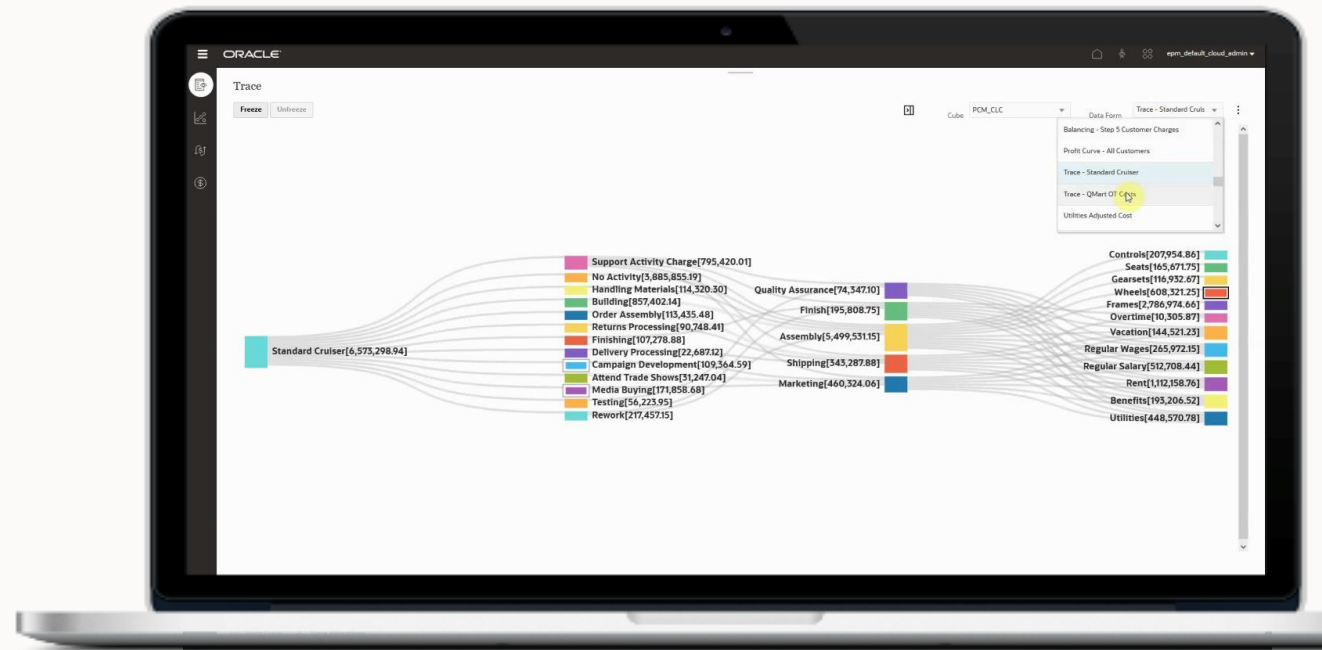
**Modélisation
& Calcul**



**Dashboards
& Analyse**



**Intégration
& Automatisation**




Transformer les données financières avec PCM

Données et référentiels sources

 Comptabilité/
données
financières

 EPM

 Ventes

 Données
opérationnelles

Frais généraux de l'entreprise

Services communs partagés

Finance, IT, HR, Admin, Installations

Services support des opérations

Opérations, Call Center, Services techniques,
Logistique

Business Development

Ventes, Marketing, Développements des produits, Plateforme technique,
Analytics

Segments de marché

Produits

Services

Clients

Géo

Canal

Transformer les données financières avec PCM

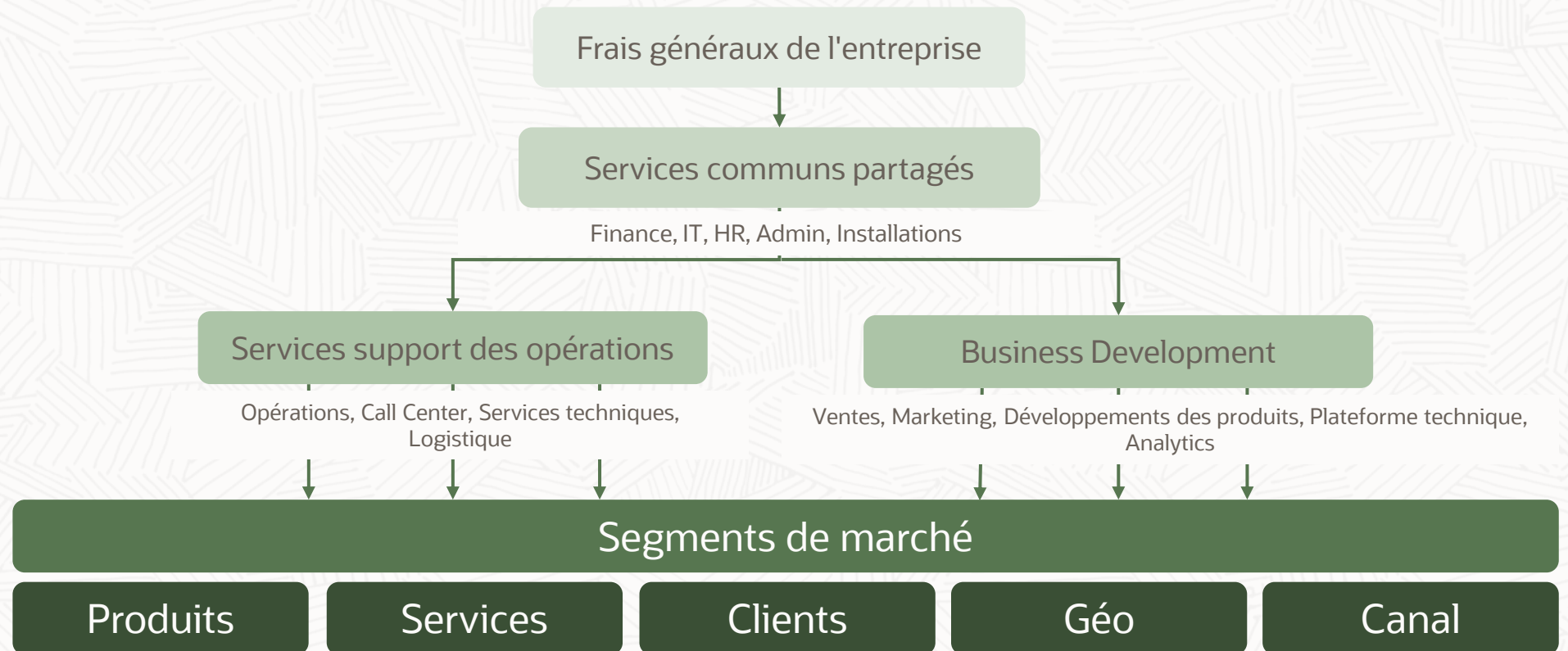
Modèle Allocations

Centaines de règles

Exécution séquentielle

Validation et Test

Auditabilité



Transformer les données financières avec PCM

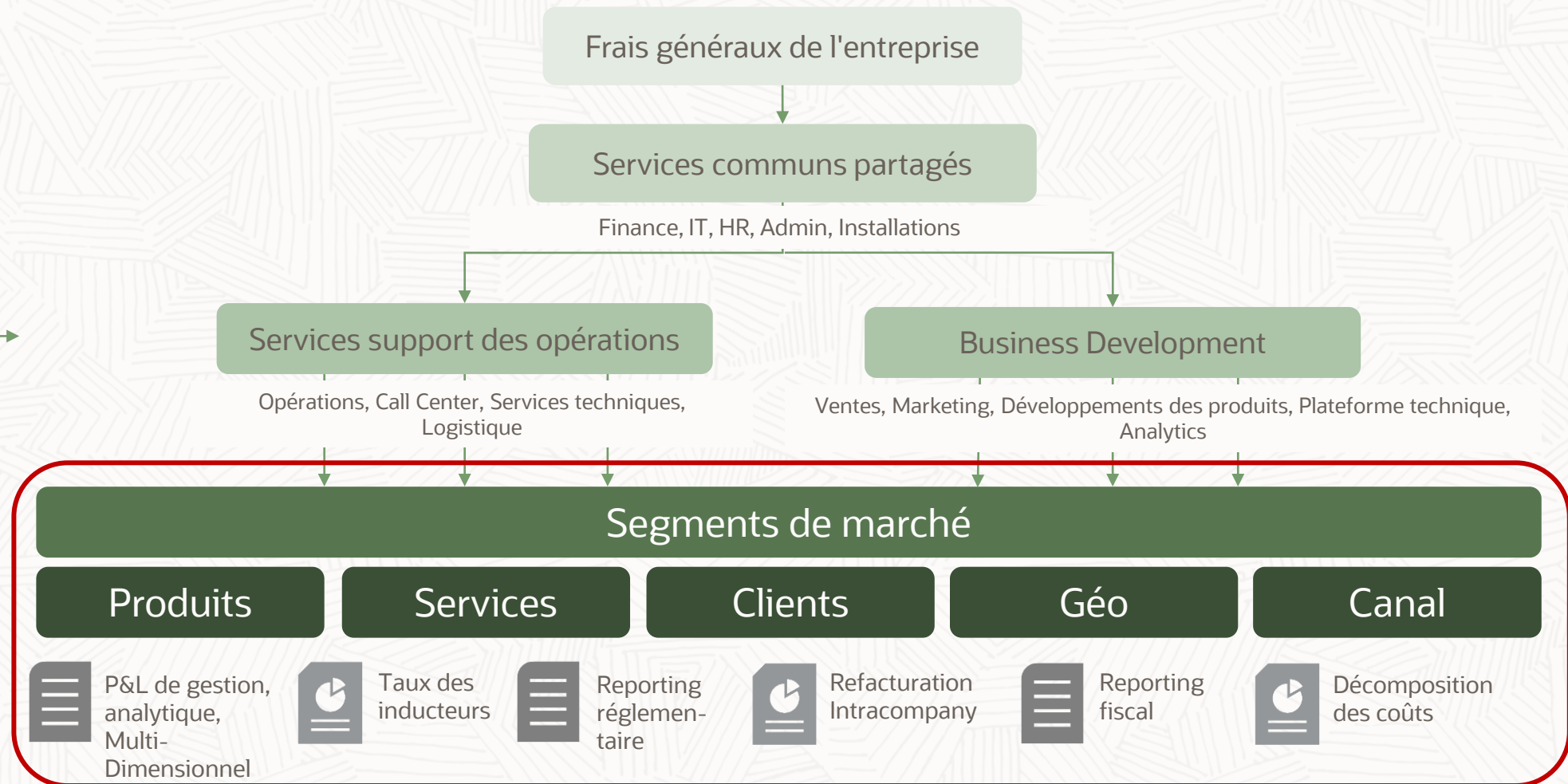
Capacité d'Analyse et de Reporting

Coûts chargés/
complets

Résultats vérifiables

Dimensions étendues

Analyse stratégique
de la rentabilité



Modélisation des allocations

Interfaces No-Code conçues pour les analystes

Capacités clés :

Designer de la cascade

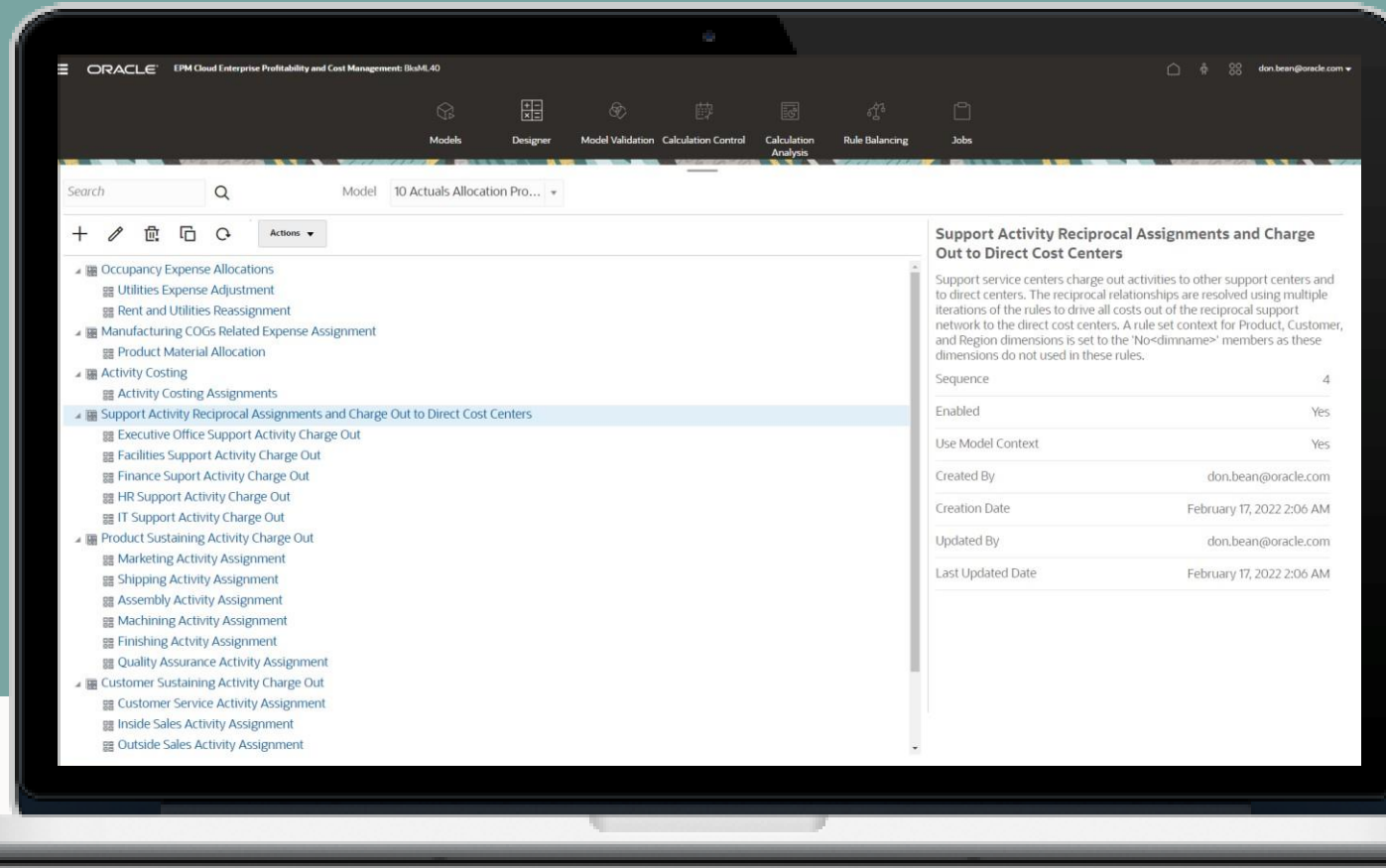
Concept de modèles

Historique de calcul enrichi

Plate-forme de règles

Dimensions des règles

Auto-documentation





Business

Welcome

Welcome to your **Profitability and Cost Management Solution**

Activity Recent Favorites

1 Announcements



Tour



Modeling



Reporting and Analysis



Scenario Analysis



Driver Data



Application



Tools

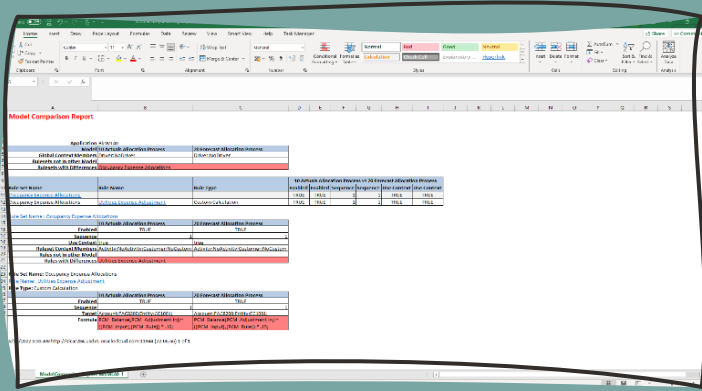


Academy



Modélisation des allocations

Validation, compréhension et comparaisons



Calculation Statistics Comparison Report

Application	BUSM60	BUSM60
POV Name	FY21-Nov-Actual-Working	FY21-Oct-Actual-Working
Model Name	10 Actuals Allocation Process	10 Actuals Allocation Process
Clear Calculated Data	True	True
Run Calculation	True	True
Capture Debug Scripts	True	True
Optimize for Reporting	True	True
Calculation Type	ALL_RULES	ALL_RULES
RuleSet Range	0	0
Rule Name	epm_default_cloud_admin	epm_default_cloud_admin
User ID	0	0
Job Status	COMPLETED	COMPLETED
Start Time	2022-03-22 18:02:48.674	2022-03-22 18:02:48.663
End Time	2022-03-22 18:05:51.149	2022-03-22 18:05:05.75
Elapsed Time	00:03:02	00:03:17

Capacités clés :

- Auto-documentation
- Comparaisons de modèles
- Analyse statistique
- Validation des règles

Model Documentation Report

Application : BUSM60
 Model Name : 10 Actuals Allocation Process
 Description : Allocation program for Actuals allocations approved for 2021.
 Created By : epm_default_cloud_admin
 Creation Date : 09/10/2022 13:29:03
 Modified By : epm_default_cloud_admin
 Modified Date : 09/10/2022 13:29:03
 Model Context : Driver-NC/Driver

Rule Set Name	Rule Name	Rule Type	Sequenc	Enabled	Use Context	Modified By	Description
Occupancy Expense Allocations				Y	Y	epm_default_cloud_admin 09/10/2022 13:29:03	Occupancy expenses are reassigned from cost centers where the expenses are paid to the cost centers that use the facilities. A Rule Set Context is defined for Activity, Product, Customer, and Region dimensions to select the "No-dimname" members. These dimensions are not meaningful in managing these rules.
Occupancy Expense Allocations	Utilities Expense Adjustment	Custom Calculation		Y	Y	epm_default_cloud_admin 09/10/2022 13:29:03	Increases Utilities Expenses by 10%.
Occupancy Expense Allocations	Rent and Utilities Reassignment	Allocation	2	Y	Y	epm_default_cloud_admin 09/10/2022 13:29:03	Rent and Utility expenses are reassigned from the Corporate cost center to the business function cost centers. A divisor based on the square feet of each building used by each cost center is used to apportion the expenses.
Manufacturing COGS Related Expense Assignment			2	Y	Y	epm_default_cloud_admin 09/10/2022 13:29:03	Materials expenses that are not included in Cost of Goods sold are applied to products in this rule set. A rule set context for Activity, Customer, and Region dimensions is set to the "No-dimname" members as these dimensions do not use in these rules.

Calculation Statistics Report

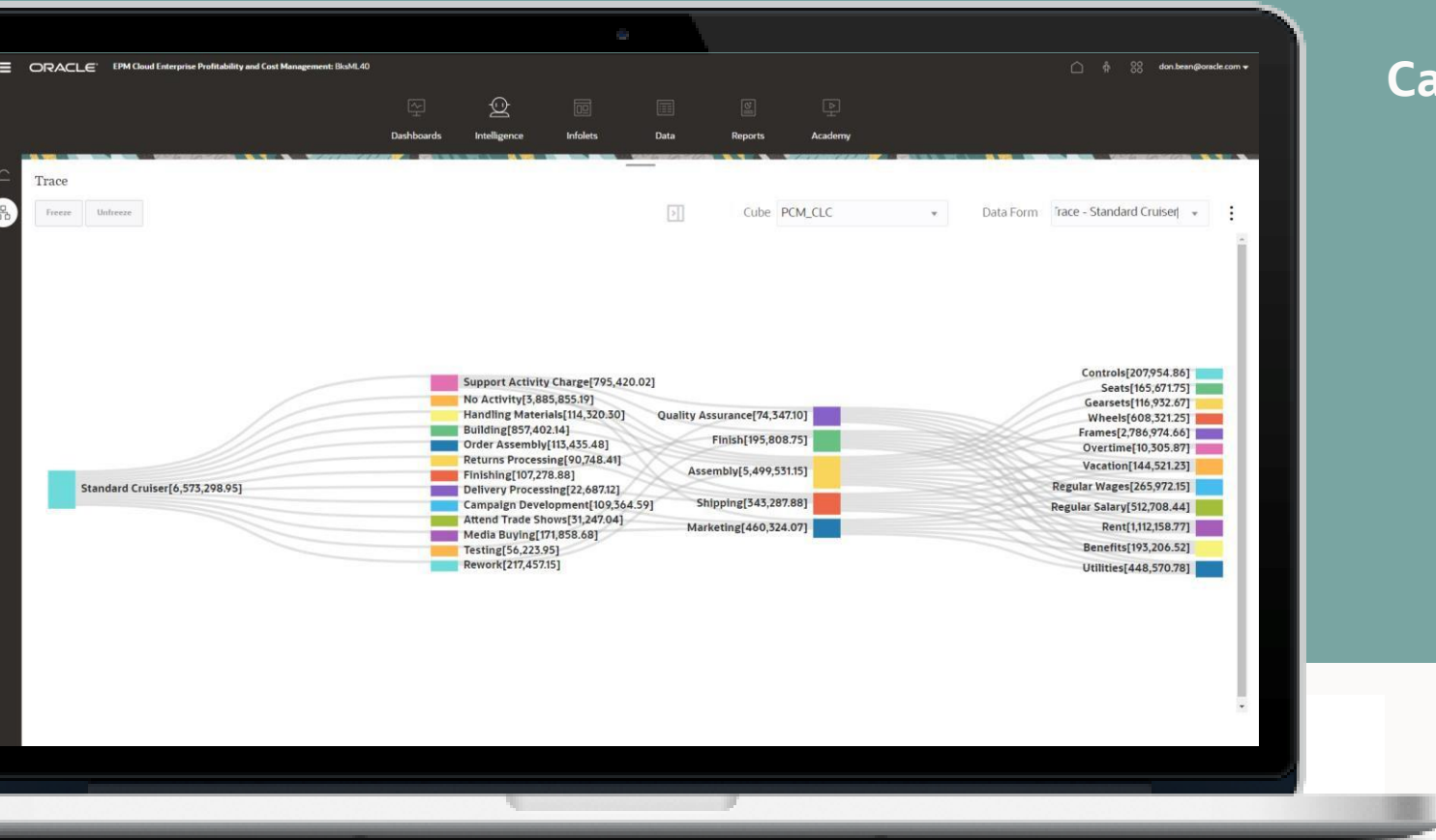
Application : BUSM60
 POV Name : FY21-Nov-Actual-Working
 Model Name : 10 Actuals Allocation Process
 Clear Calculated Data : True
 Run Calculation : True
 Capture Debug Scripts : True
 Optimize for Reporting : True
 Calculation Type : ALL_RULES
 RuleSet Range : 0
 Rule Name : epm_default_cloud_admin
 User ID : 0
 Job Status : COMPLETED
 Start Time : 2022-03-22 18:02:48.674
 End Time : 2022-03-22 18:05:51.149
 Elapsed Time : 00:03:02

Rule Set Name or Rule Name	SI	Revision Number	Start Time (Interval)	Elapsed Time (Interval)	Computation (Interval)	Calculation (Interval)	Thread Number	Number of Rules	Number of Scripts	Interval Success	Interval Failures	Interval Allocations	Costs Expended
Occupancy Expense Allocations			18/09/2022 18:03	00:00:00	00:00:00	00:00:00	1107	1	1	1	0	0	0
Utilities Expense Adjustment	UC	1	18/09/2022 18:03	00:00:00	00:00:00	00:00:00	1107	1	1	1	0	0	0
Rent and Utilities Reassignment	UC	1	18/09/2022 18:03	00:00:00	00:00:00	00:00:00	1107	1	1	2	23	56	30
Manufacturing COGS Related Expense Assignment			18/09/2022 18:03	00:00:00	00:00:00	00:00:00	1107	1	1	0	0	0	0
Product Material Allocation	UC	1	18/09/2022 18:03	00:00:00	00:00:00	00:00:00	1107	1	1	0	42	102	11
Activity Costing			18/09/2022 18:03	00:00:00	00:00:00	00:00:00	1107	1	1	0	0	0	0
Activity Costing Adjustments	UC	1	18/09/2022 18:03	00:00:00	00:00:00	00:00:00	1107	1	1	10	194	49207	279
Support Activity Recognition			18/09/2022 18:03	00:00:00	00:00:00	00:00:00	1107	1	1	0	0	0	0
and Change Out to Direct Cost Centers			18/09/2022 18:03	00:00:00	00:00:00	00:00:00	1107	1	1	0	0	0	0
Executive Office Support Activity Change Out			18/09/2022 18:03	00:00:00	00:00:00	00:00:00	1107	1	1	0	0	0	0



Transparence et fiabilité

Visibilité des résultats, des règles et des processus



Capacités clés :

Courbes de traçage et de rentabilité puissantes

Analyse complète des calculs

Tableaux de bord et rapports

Formulaires de données et Smart View

Adaptateur



Business

Welcome

Welcome to you **Profitability and Cost Management Solution**

Activity Recent Favorites

1 Announcements

Tour

Modeling

Reporting and Analysis

Scenario Analysis

Driver Data

Application

Tools

Academy

Analyse et compréhension

Améliorer la rentabilité et l'analyse des coûts

Capacités clé :

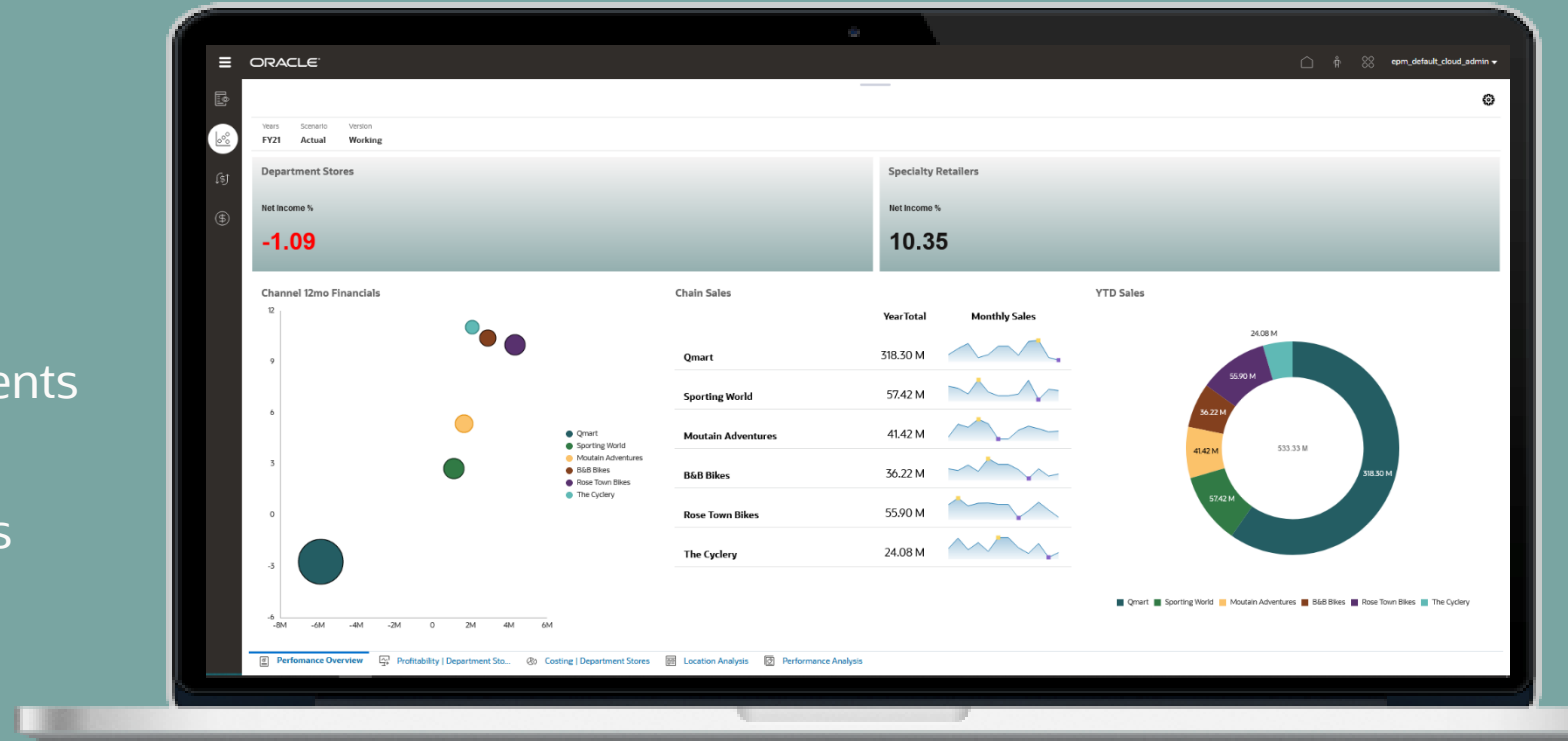
Modélisation de plusieurs scénarios

Comprendre les pressions sur les coûts/profits

Analyser les facteurs et les changements de modèle

Détecter les tendances et les modèles

Équilibrage des règles avec analyse détaillée





Welcome

Welcome to your Profitability and Cost Management Solution

Activity Recent Favorites

1 Announcements



Tour



Modeling



Reporting and Analysis



Scenario Analysis



Driver Data



Application



Tools



Academy



Oracle Cloud EPM – Profitability and Cost Management

Ce que nous faisons de façon unique



Transparence et fiabilité



Hub d'allocations



Modélisation démocratisée

Les innovations récentes





The following is intended to outline our general product direction. It is intended for information purposes only, and may not be incorporated into any contract. It is not a commitment to deliver any material, code, or functionality, and should not be relied upon in making purchasing decisions. The development, release, timing, and pricing of any features or functionality described for Oracle's products may change and remains at the sole discretion of Oracle Corporation.

Future of finance



Reimagine Finance

New finance operating model

- Connect and align planning across the enterprise
- Collaborate actively with operating functions
- Bookkeeper → Strategic advisor

Empower Decisions

Decision making with insights

- Leverage all data: Operational & financial, Internal & external
- Lower the skills bar on data science access
- Enable trust and confidence to ensure adoption

Automate Tasks

Manual tasks made efficient

- Reduce manual labor in finance processes
- Minimize time spent gathering and analyzing data
- Allow finance to focus on value-added activities

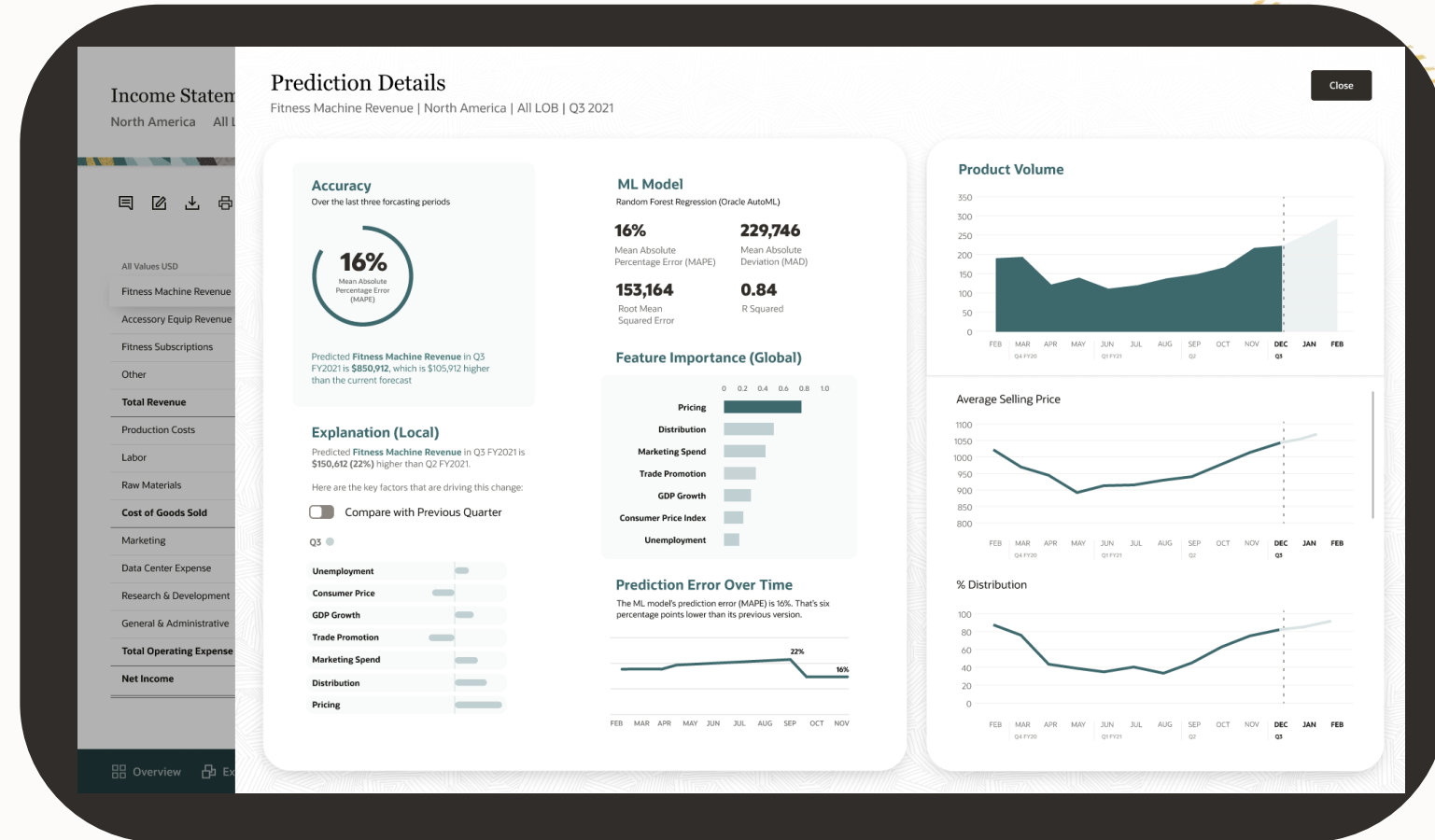


Intelligent Performance Management



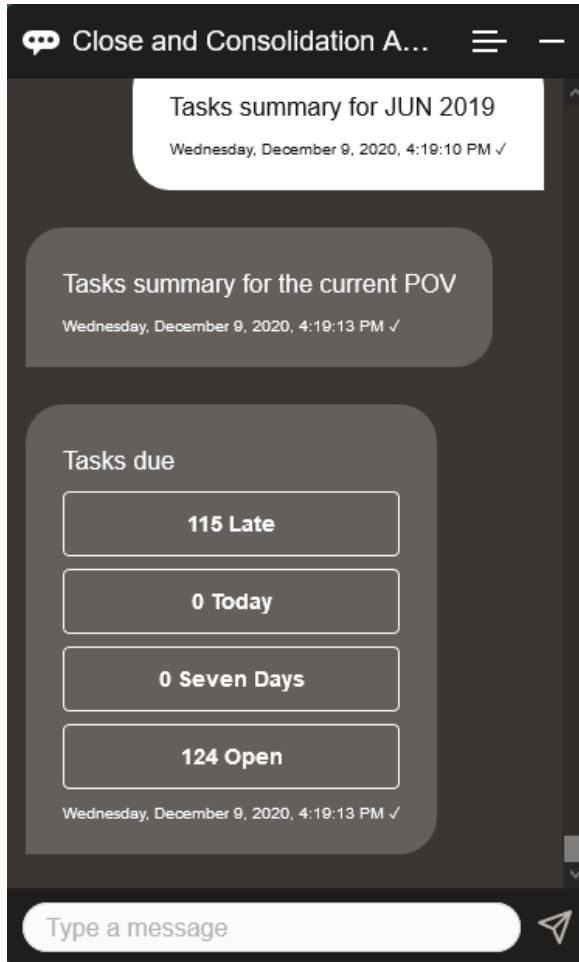
Reveal Hidden Correlations & Realize Faster Time-to-action:

1. Signal Detection
 - Forecast, Prediction, Anomaly,...
2. Root Cause Analysis
3. Insight Discovery
4. Action Recommendation
5. Collaborative Reporting
6. Intelligent Narrative

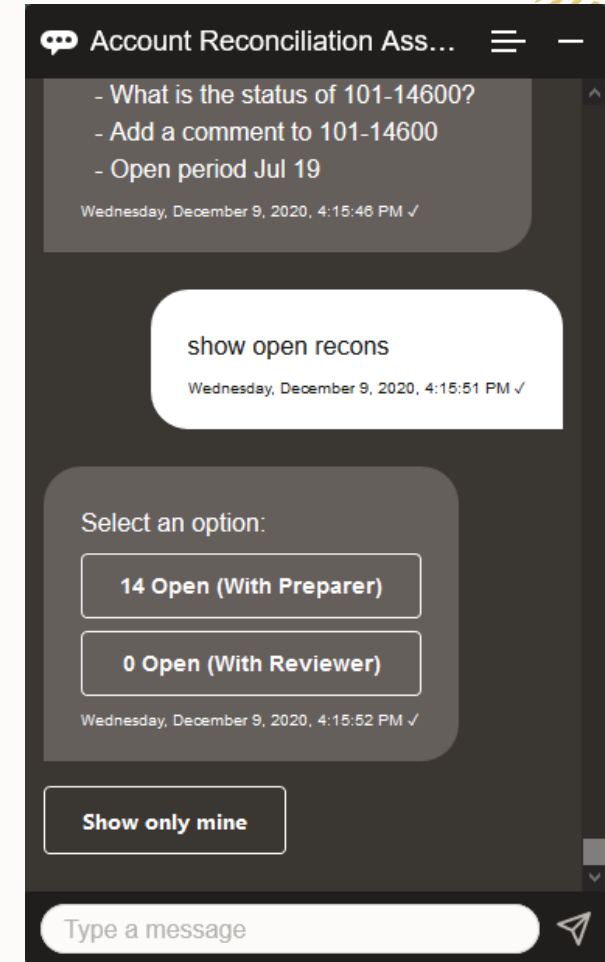


Expanding EPM Access

Oracle Digital Assistant for EPM



- ✓ Financial Consolidation and Close
- ✓ Account Reconciliation
- Planning



Oracle Digital Assistant Conversational Interface for Planning in EPM Cloud

1. Simple Query

What is the value for account 'ABC'?

2. Simple Action

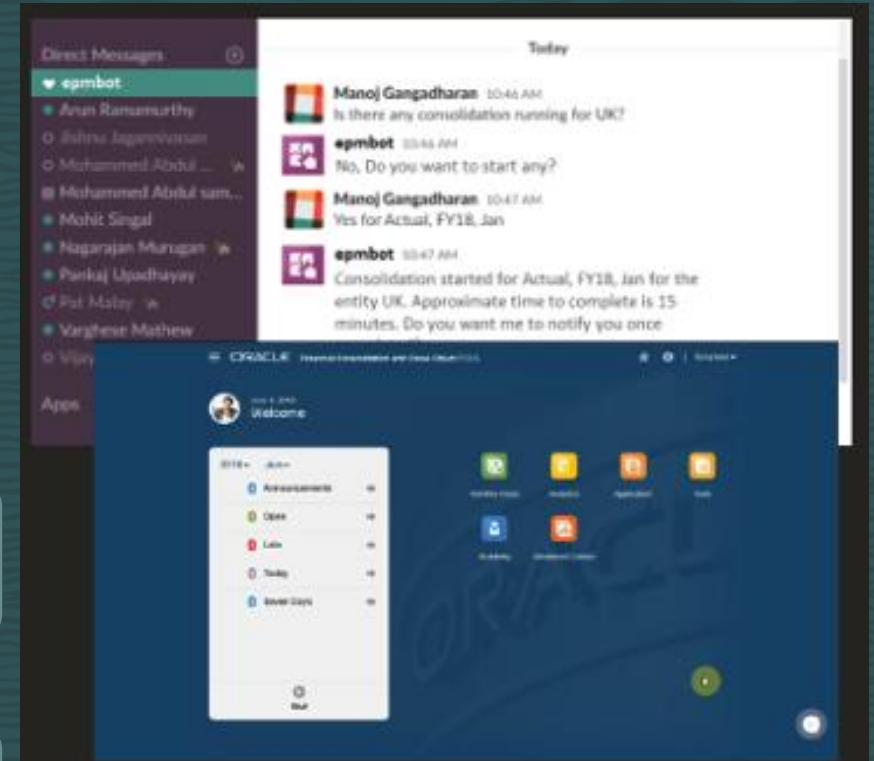
Change account 'ABC' by '\$100'...

3. Intelligent Query

Are there any major variances from last year?

4. Intelligent Action

Change driver 'xyz' to keep my budget below target...

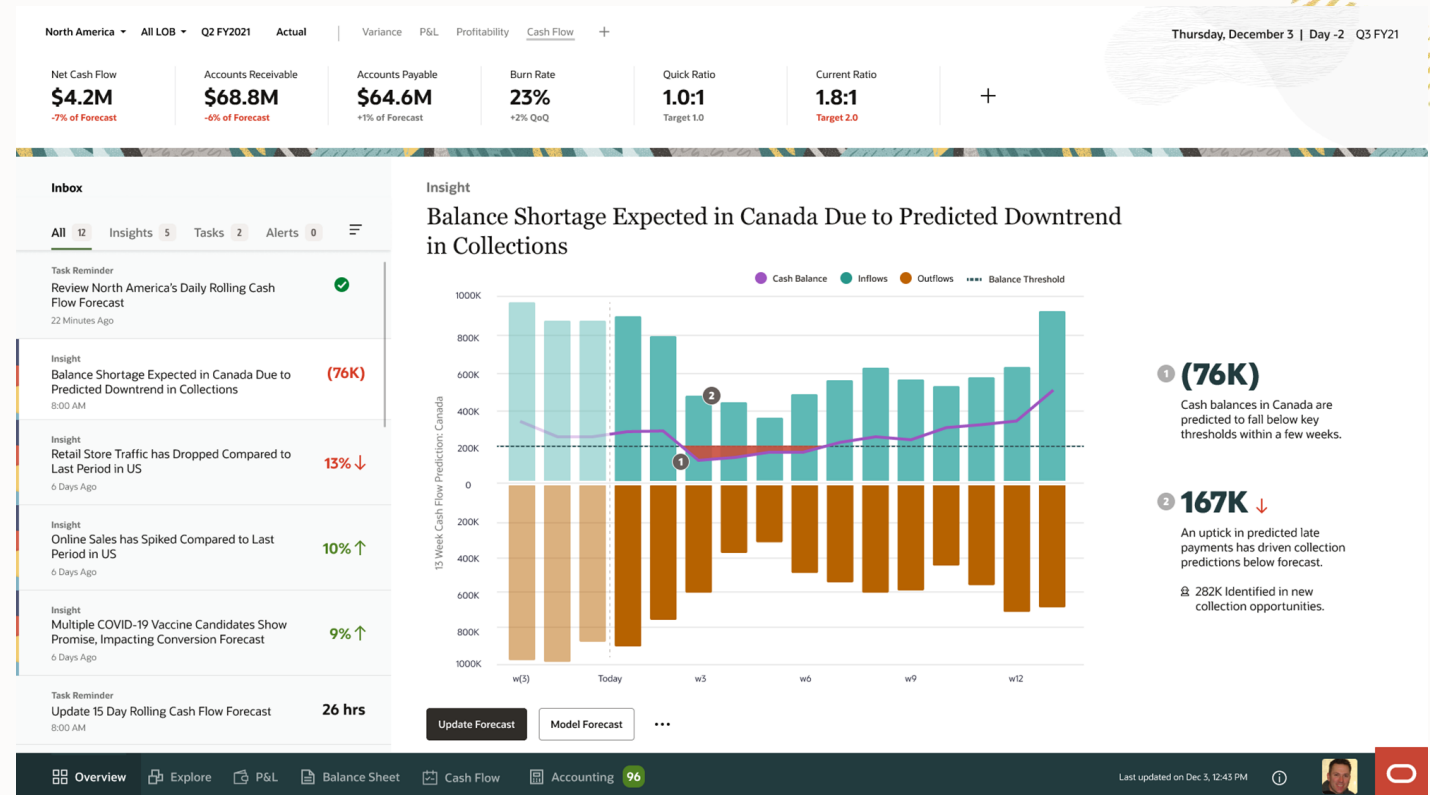


Platform enhancements



R&D Underway

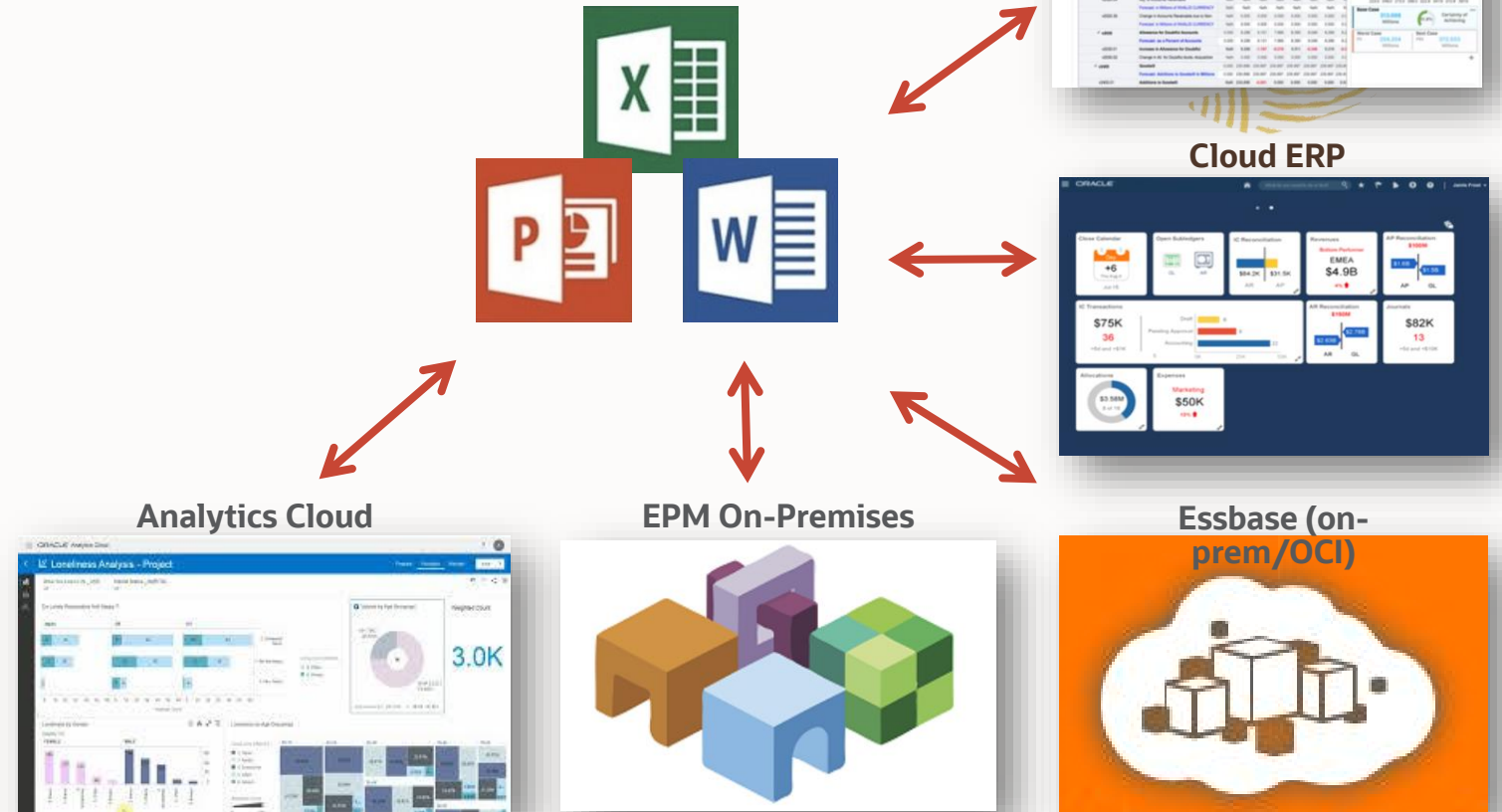
- Usability
 - Forms With New Grids
 - Dashboards With New Form Grids
- Platform
 - Cross App Data Maps
 - Reporting Cube Sourced Data Maps
 - SUI Dimension Editor
 - Flexible Approvals
 - Granular EPM Access Roles



Oracle Smart View for Office

R&D Underway

- Cloud EPM Platform
 - Performance improvements
 - Improved Alias Support
 - Improved member and artifact search
 - Ad-hoc Reports Integration
- Adobe InDesign
 - Management Reports
 - Report Package support
- Google Office
 - Planning use case (Ad-hoc, Forms, BRs)



EPM Integration – Any Source or Target Combination



R&D Underway

- Usability
 - Simplified UI Parity
- Platform
 - Direct drill – Bypass workbench
 - Cross-Instance Drill
 - Data Integration Hub
 - Improved Error Reporting



On-premises



EPM Integration Agent
EPM Automate
REST API



EPM
Cloud

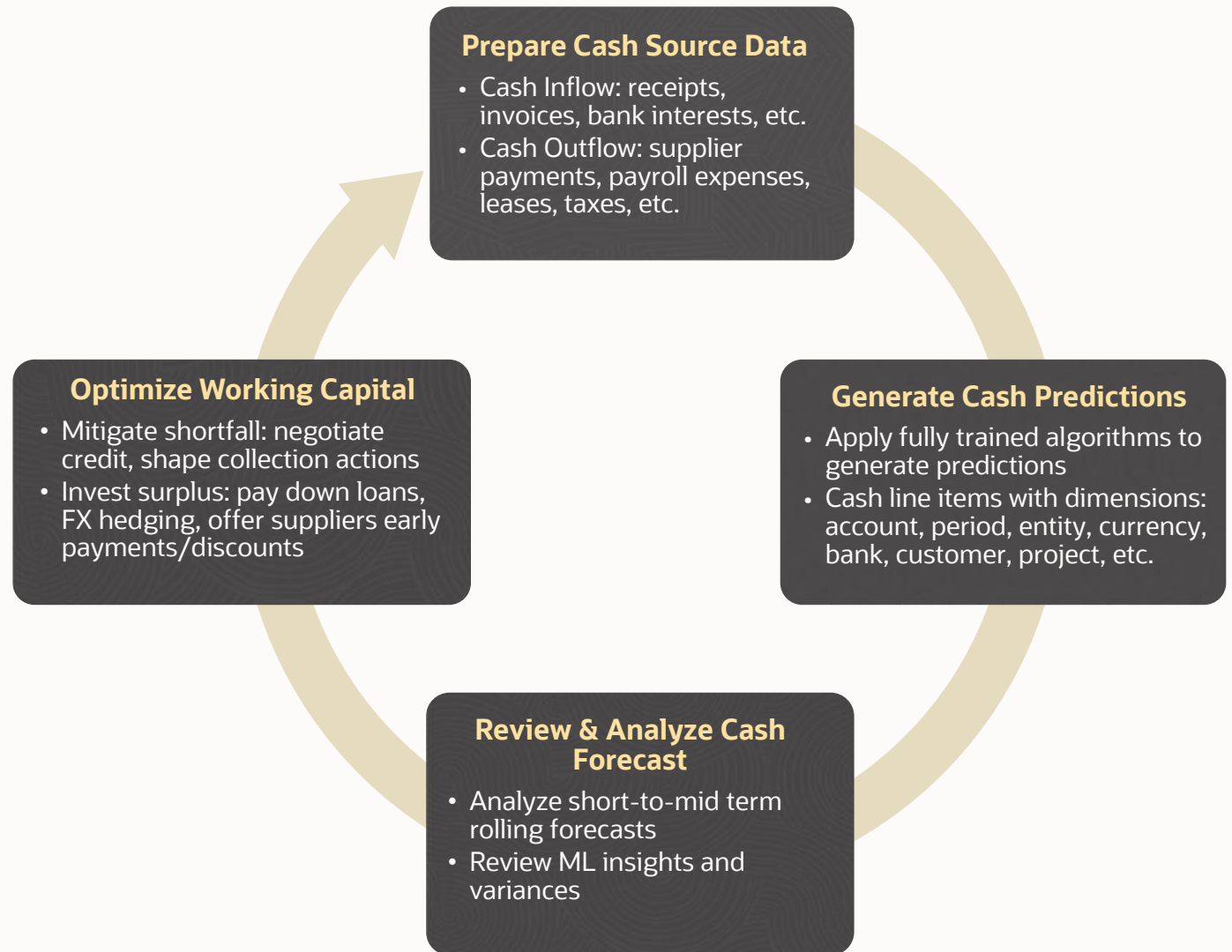


Predictive Cash Forecasting

Optimize Cash with Real-time Forecasting by automating data collection and leveraging ML for short-to-medium term predictions

Gain Operational Insights with faster discovery of emerging trends and potential problem areas

Embedded Actions for Treasury, FP&A, Accounting and Operations to manage liquidity decisions



Customer-First Mindset

Cloud Service Excellence

Best Technology Platform

Increased investments in Digital

Next-gen Infrastructure

Continuous feedback loop between
Development and Support

Development Programs

Active Customer Connect community

Implementation Success

HFM Application Analysis

Welcome to Cloud Customer Connect

Oracle's premier online cloud community

Watch overview video



Your Voice Matters

Have questions about an Oracle product? Join our discussions to get help from Oracle experts, customers and partners.

Learn more

Shape Oracle's Future

Let us know how we can improve, see what your peers have in mind, and vote for your favorite ideas.

Learn more

Develop Your Personal Brand

Earn recognition and strengthen your professional reputation when you share your knowledge with the community.

Learn more

302,895 Users 197,801 Discussions 575,810 Comments



GEFCO – Oracle EPM Cloud

Communauté Clients Oracle France

7 Juillet 2022



GEFCO & l'EPM Oracle

Contexte



Partners, unlimited

GEFCO: histoire



- 🚚 **1949 – Création de Gefco, filiale de PSA**
- 🚚 1951 – Premiers véhicules sur wagons
- 🚚 1971 – Gefco Benelux
- 🚚 1976 – Gefco Allemagne
- 🚚 1978 – Intégration des entreprises de transport Citroën
- 🚚 1981 – Gefco UK, Espagne et Italie
- 🚚 1999 – Gefco Portugal, Pologne, Argentine et Brésil
- 🚚 2001 – Gefco Maroc et Turquie
- 🚚 2003 – Gefco Tunisie, République tchèque et Russie
- 🚚 2004 – Gefco China, Australie et Slovaquie
- 🚚 **2012 – RZD acquière 75% du capital de GEFCO**
- 🚚 2017 – Premier train depuis Wuhan à Dourges

GEFCO: Chiffres clés

Expert mondial de la chaîne logistique en matière de logistique automobile

Nous avons construit notre expertise en relevant les challenges logistiques de nos partenaires et nos clients.

Leader en logistique industrielle

- **70 ans** d'expérience dans tous les secteurs de l'industrie
- **N°1** européen en logistique automobile
- **Top 10** des transporteurs mondiaux
- **4,2 milliards** d'euros de chiffre d'affaires en 2021

Présent partout dans le monde

- **Plus de 300** implantations desservies dans le monde
- **7** gateways mondiales
- Actif sur les **5** continents

Diversité et richesse des compétences

- **11 500** collaborateurs dans le monde
- **100** nationalités
- Présence dans **47** pays



GEFCO: Oracle EPM

- ✓ Essbase (S9) depuis... toujours?!
 - ✓ Hyperion Planning depuis 2011
 - ✓ Migration vers PBCS en 2017
- ➔ Application « COSY » pour « **C**Ontrolling **S**ystem »
- 3 processus financiers: réel, budget et Forecast
 - 280 utilisateurs
 - 3 cubes BSO
 - ~250 formulaires de saisie
 - ~180 règles métier
 - Utilisation du workflow
 - Centre de service dédié

Oracle PBCS

3 cas pratiques



Partners, unlimited

Oracle EPM: à l'épreuve de la cyberattaque

Septembre 2020: cyberattaque mondiale de type ransomware

- Tous les systèmes opérationnels touchés
- Impossibilité pour les collaborateurs de se connecter au réseau Gefco

COSY:

- ✓ Reste accessible
- ✓ Devient une zone de partage
- ✓ Le budget 2021 n'est pas impacté



Oracle EPM: flexibilité des ressources

Septembre 2021: bascule du centre service depuis Talan vers Infosys

- ✓ Passage de 2 à 3 consultants | 280k€/an → 175k€/an
- ✓ Haut niveau de compétences techniques et fonctionnelles
- ✓ Expérience et proactivité



Oracle EPM: agilité de la technologie

2021 - 2022: réorganisation, plan, rachat...

- Changements dans le modèle de gestion
 - Demandes additionnelles: Pilotage des coûts IT
 - Nouvelles définition du reporting de gestion
 - Suivi des synergies de réorganisation
-
- ✓ Grande flexibilité de PBCS
 - ✓ Performances maintenues
 - ✓ Taille des bases maîtrisées



ORACLE



CLUB UTILISATEURS
DE SOLUTIONS ORACLE

Merci de votre participation