

France User Group PeopleSoft Tour

PeopleSoft Product Line Update and Ongoing Investment Strategy

Marc Weintraub
Vice President, Product Strategy
PeopleSoft
Jun 2018

ORACLE®

ORACLE®
PeopleSoft

Safe Harbor Statement

The following is intended to outline our general product direction. It is intended for information purposes only, and may not be incorporated into any contract. It is not a commitment to deliver any material, code, or functionality, and should not be relied upon in making purchasing decisions. The development, release, and timing of any features or functionality described for Oracle's products remains at the sole discretion of Oracle.

On the Journey Together

You Told Us What Your “Modern” Applications Would Be Like



Simple, Intuitive, Mobile User Experience



Agile Innovation of Business Functions



Low Cost, Responsive Development Operations

Making of a Modern Solution

Today's PeopleSoft Has What You Are Looking For

Intuitive, Mobile
User Experience

Global Search,
Alerts, Notifications

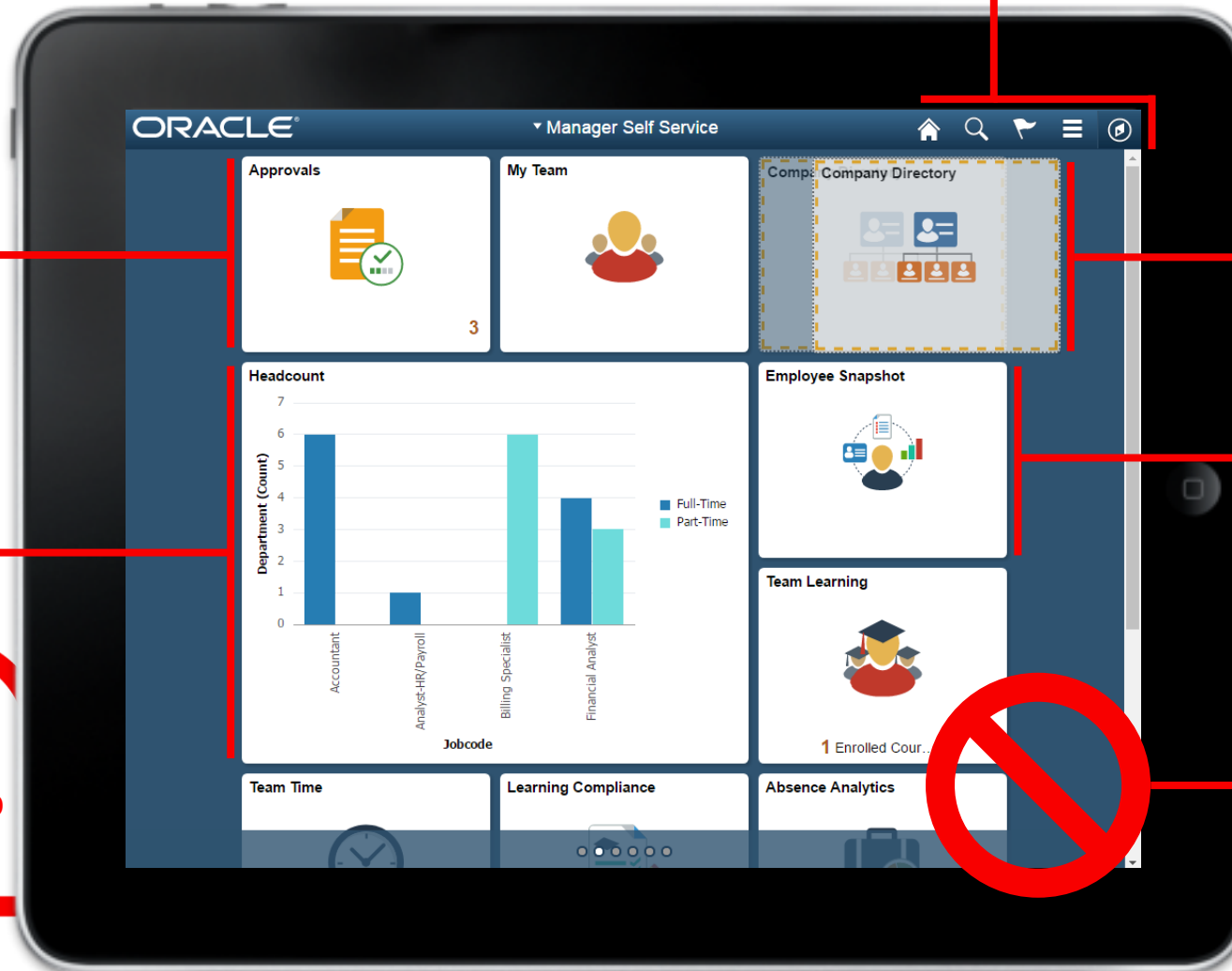
Flexible and
Personalizable

Actionable,
Embedded Analytics

Selective Adoption
of New Features

Deployment to
Oracle Cloud

No Applications
Upgrades Needed



The State of Today's PeopleSoft

Strong Customer Adoption Driven by Continued Investment and Long-Term Support



2030
support “through
at least”



4x
a year updates
are delivered



12 – 18
rolling month
roadmap



80%
adoption rate



5,000+
customers
worldwide



1,500+
new features
delivered

The State of Today's PeopleSoft

Strong Customer Adoption Driven by Continued Investment and Long-Term Support



2030

support “through
at least”



4x

a year updates
are delivered



12 – 18

rolling month
roadmap



80%

adoption rate



600+

customers in
EMEA



1,500+

new features
delivered

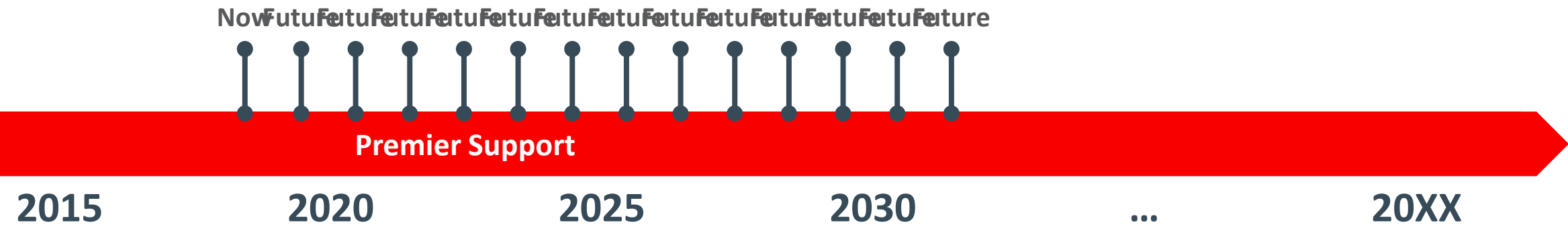
Long-Term Investment and Support

Committed to Customers, Innovation, Existing Products*

- No plans to end investment or support
- Premier Support “through at least” 2030
- Rolling 10+ years of Premier Support



Enabling customers to **confidently** maximize and expand their existing Oracle application investments with ample time for future planning based on Oracle’s **commitment** to support its existing applications via a **stable** and **predictable long term** support policy.



At Least a Decade of Oracle Premier Support



*PeopleSoft, eBusiness Suite, JDE Enterprise One, Siebel

Today's PeopleSoft Mode of Delivery and Consumption

PeopleSoft Selective Adoption Enabled by the PeopleSoft Update Manager



In a **world without upgrades** your business systems are agile and responsive.



Continuous innovation with new features and maintenance delivered frequently.



You're in control and decide what changes to apply and when to apply them.

Selective Adoption in Action

Investment in Impactful New Capabilities

Promote Employee [Exit] [Next >]

John Patterson
Manager-Revenue

1 Job Detail 2 Compensation Detail 3 Review & Submit

Work and Job Information

*Transaction Date: 09/19/2017
Reason: Outstanding Performance

New Information		Current Information	
*Business Unit	Global Business Institute BU	Global Business Institute BU	GBIBU
*Department	Revenue Management	Revenue Management	13140
*Location	Arizona Operations	Kansas Operations	KUKS00
*Job Title	Senior Manager-Finance	Manager-Revenue	600155
Full/Part Time	Full-Time	Full-Time	
Standard Hours	40.00	40.00	
FTE	1.000000	1.000000	

● Changes Made
● Required Field

Innovations in HR Self-Service

- Managers were looking for a simple, intuitive way to execute tasks when managing their team.
- Guided, question based compound transactions using Fluid UI and configurable Activity Guides.
- Initial delivery in HCM PI 8 (Oct '14); enhanced in 14 subsequent PI's up to PI 24 (Oct '17).

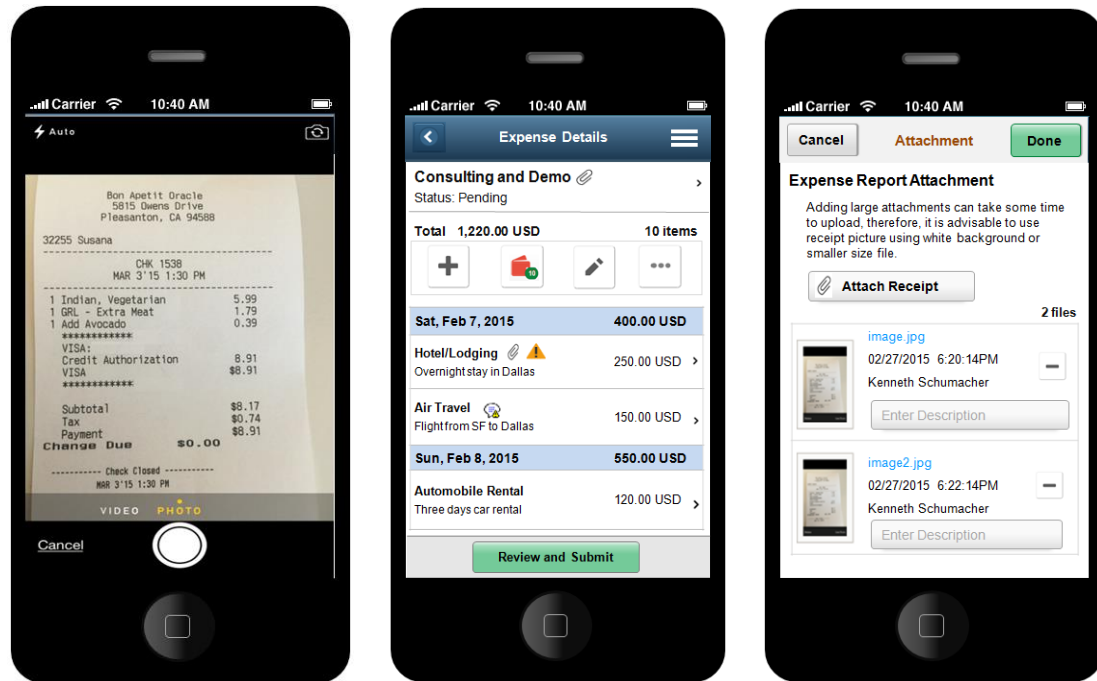
Adoption

- 40+ organizations live with 20 more in progress.



Selective Adoption in Action

Investment in Impactful New Capabilities



Innovations in Expense Reporting

- Mobile employees required a highly productive, consumer internet like expense reporting process.
- Redesign of Expenses using Fluid UI in conjunction with Fluid UI approvals.
- Initial delivery in FSCM PI 19 (Jun '16); enhanced in PI 22 (Dec '16) and PI 24 (Jun '17) and PI 25 (Sept '17)

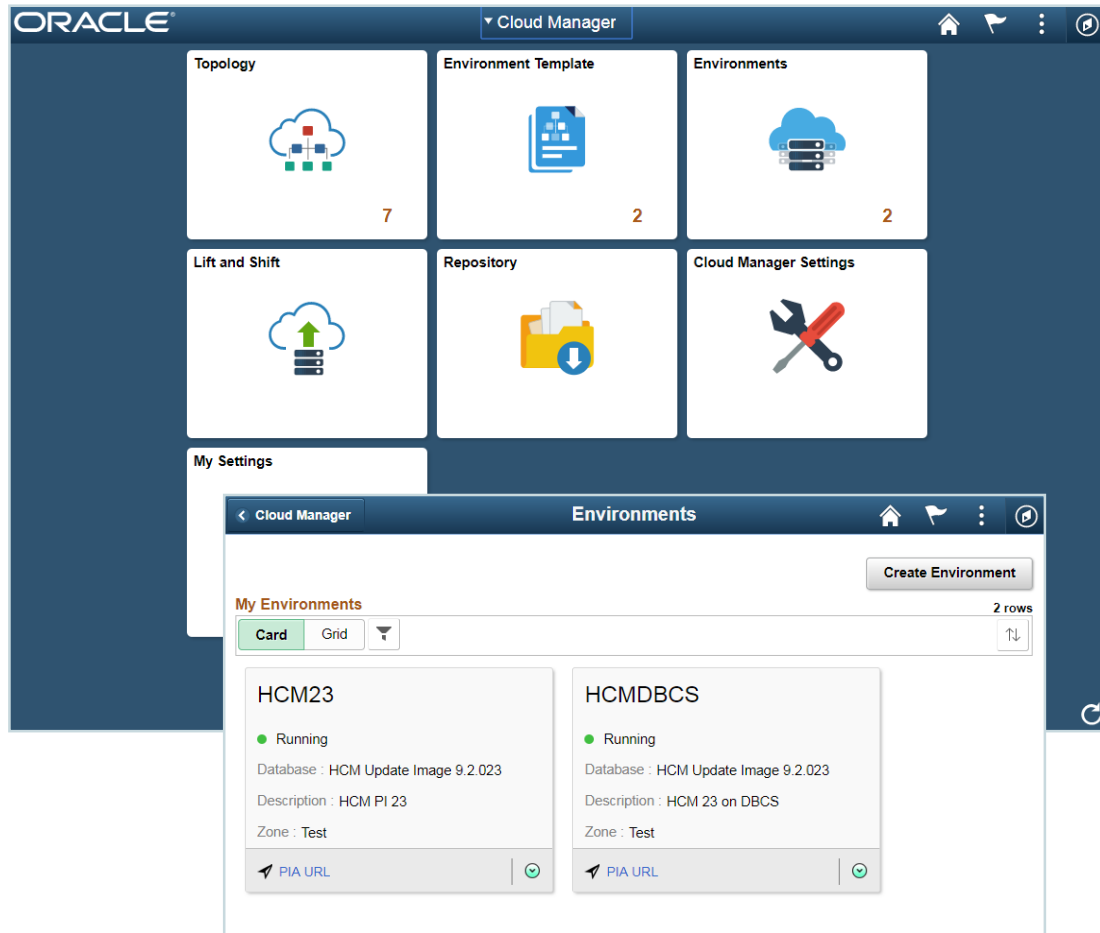
Adoption

- 70+ organizations live or implementing.



Selective Adoption in Action

Investment in Impactful New Capabilities



Innovations in Cloud Deployment

- Customers sought lower operational costs associated with owning and operating PeopleSoft.
- New Cloud Manager solution for simplified environment management on the Oracle Cloud.
- Initial delivery in CM PI 3 (Feb '17); enhanced in PI 4 (Jun '17) and PI 5 (Sep '17) and more soon.

Adoption

- 100+ organizations leveraging Oracle Cloud for PeopleSoft.



Breaking Down Cloud Deployment

On Premise is Now Any Premise with PeopleSoft's Flexible Choice of Deployment



Deploy Anywhere: Oracle Cloud, On-Premise, or Hybrid

Breaking Down Cloud Deployment

Deploying PeopleSoft to Oracle Cloud with PeopleSoft Cloud Manager

Cloud Computing

- Elastic scaling based on demand
- Compute, Storage, Networking, Database as a Service, more...
- Industry leading secured environments



Migrate to Oracle Cloud

- Lift and Shift existing environments to Oracle Cloud
- Migration of your configuration, data, and customizations
- Backup and restore to Oracle Cloud



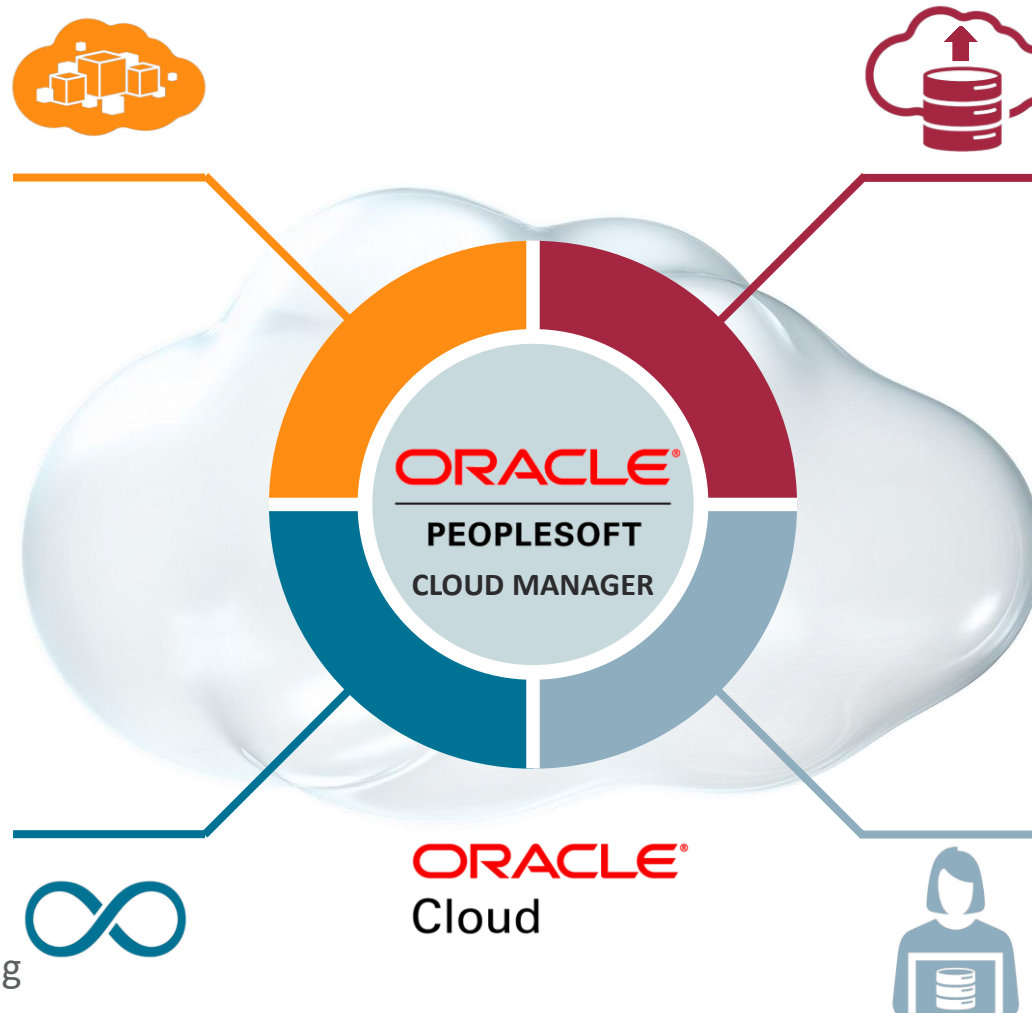
Life Cycle Management

- Subscription to update release channels
- Complete environment management
- Application & PeopleTools patching



Self Service Provisioning

- Template driven provisioning enables business users
- On-demand environments for specific use cases
- Unique topology definitions



Breaking Down Cloud Deployment

Where Do You Start?

Demo and Update Manager Environments

What's on the Oracle Cloud?



Demo from the Oracle Cloud Marketplace



Update Manager Source

What's on Premise?



Dev/Test/Staging/Training



Production

What's it Means to You?

Immediately assess the latest PeopleSoft capabilities.

Non-Production Environments

What's on the Oracle Cloud?



Dev/Test/Staging/Training

What's on Premise?



Production PeopleSoft

What's it Means to You?

Business agility and cost savings.

Learn more at the [PeopleSoft on Oracle Cloud](#) concept page and contact your Technology sales representative.

All (including Production) Environments

What's on the Oracle Cloud?



Non-Production PeopleSoft



Production PeopleSoft

What's on Premise?



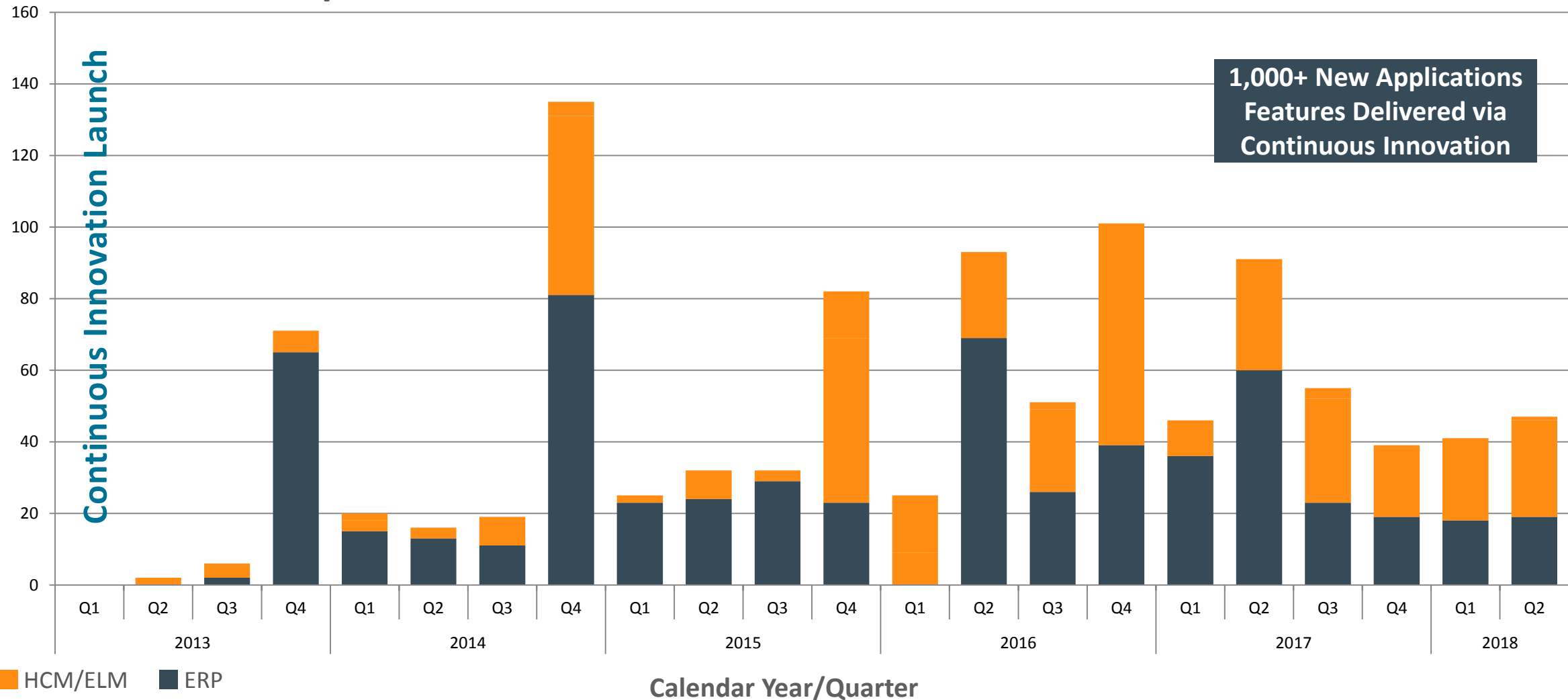
Non-PeopleSoft

What's it Means to You?

Greater business agility, cost savings, and lower risk

Continuous Innovation in Action

Investment in PeopleSoft Over Time



Continuous Innovation in Action

Notable Deliverables Over the Last Year

Delivered

HCM

CRM (8)

Image 14

Jul 2017

23 New Features

- Onboarding
- Dotted Line Reporting
- PNA Lockdown
- Activity Guide Composer

Image 23

Aug 2017

ELM (6)

Image 16

Jul 2017

20 New Features

- Classic Plus
- Guided Self Service Multi-Select
- Onboarding Manager View
- Updated I-9 Form

Image 24

Oct 2017

20 New Features

- Timesheet Payable & Elapsed Time
- Manage Profiles Enhancements
- PLUS Tax & Legislative Updates

Image 25

Jan 2018

CRM (3)

Image 15

Apr 2018

ELM (3)

Image 17

Mar 2018

27 New Features

- Recruiting Home Page and Nav Collection
- Timesheet Quick Fill
- Employee Snapshot – for Administrators

Image 26

Apr 2018

Jun 2017

Jun 2018

ERP

60 New Features

- Twilio for Expenses
- Supplier 360
- Configurable Analysis Framework
- eBill Payment

Image 24

Jun 2017

23 New Features

- Supplier Scorecarding
- Add Copy for Fluid Payment Request
- Approvals for Work Order and Preventive Maintenance

Image 25

Sep 2017

19 New Features

- Classic Plus
- Finance and Accounting Home Page
- Grants Home Page
- 3 New Approvals

Image 26

Dec 2017

18 New Features

- Lease Accounting Migration Guide
- Purchase Order Acknowledgements
- ePro Requisition Enhancements

Image 27

Mar 2018

19 New Features

- Treasury WorkCenter
- eSettlements Redesign
- Bidder Invitation Page Enhancements
- Expanded Search
- AM Attachments

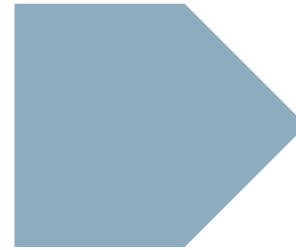
Image 28

Jun 2018

You Are PeopleSoft

Connecting the PeopleSoft Community

Maintaining the strength of the community is key to PeopleSoft's long-term viability.



Activities that Support the Community

- Sharing Customer Success Stories
- Recognizing Customer Innovation
- Communicating Directly to Customers



Sharing Customer Successes Stories

Brought to You by the Quest User Group

- 20+ Customer Success Stories
- Many More to Come in the Future
- Stories on:
 - Successful Upgrades
 - Fluid UI Deployment
 - Selective Adoption Execution
 - PeopleSoft Deployments to the Oracle Cloud
- Join Quest to be Part of the Community
- Share Your Success Story Too

learn more at **ORACLE®** PeopleSoft Information Portal

and at



www.questdirect.org/stories/ps

The screenshot displays the Quest International Users Group website. At the top, there is a navigation bar with the Quest logo, a 'LOGIN' button, and links for 'Events', 'Community', and 'Education'. The main content area features a highlighted 'CUSTOMER STORY: UNIVERSITY OF NEW SOUTH WALES (UNSW)'. This story includes the UNSW logo and a quote from Pete Murray, Head of HR Operations and Systems, discussing the move to PeopleSoft HCM. Below this, a section titled 'MORE CUSTOMER STORIES' offers filters: 'SHOW ALL', 'FLUID', 'SELECTIVE ADOPTION', 'UPGRADE', and 'PEOPLESOFT IN THE CLOUD'. Four story cards are visible, each with a company logo, name, sector, and a brief description of the success story. The cards are for Alameda County (Public Sector), Beth Israel Deaconess Medical Center (Higher Education), Capella University (Healthcare), and Centene Corporation (Healthcare). At the bottom, there are logos for Children's Hospital, CACAPAS, cru, and DEAKIN.

What is the Quest PeopleSoft Community?

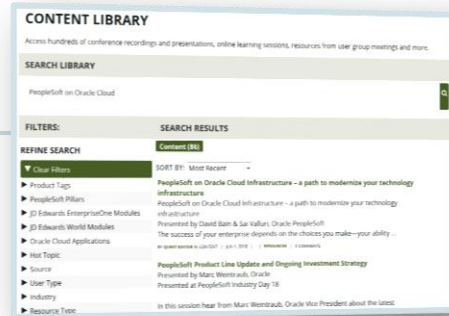
Additive to Club Utilisateurs de Solutions Oracle www.questdirect.org

All Regions and Industries



Live Events

Attend PeopleSoft-focused conferences, regional and special interest groups



Content Library

4,000+ presentations and recordings, plus curated content centers on key topics



Success Stories

Library of real-world benefits and lessons learned from fellow customers



Virtual Events

150+ webinars each year, plus focused virtual events by region and industry

Plus the official PeopleSoft newsletter, Q&A Magazine, community survey results, direct customer interactions, and more.

Recognizing Customer Innovation

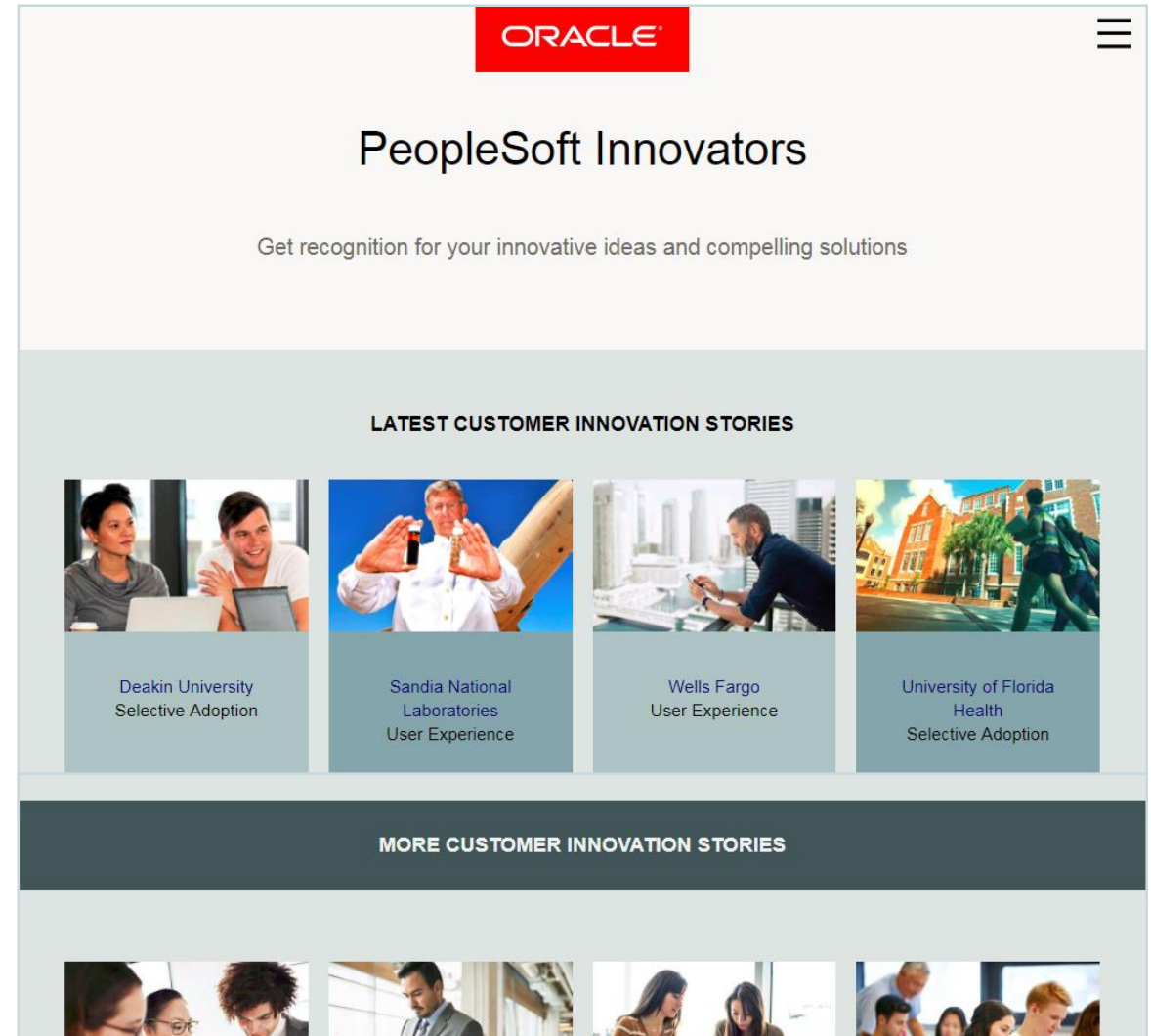
PeopleSoft Innovators

- Get recognized for how you're using Today's PeopleSoft!
- Open to all. Customers and partners can be nominated.
- Highlighted at events, blogs, and on PeopleSoft Innovators site.
- Nominate yourself or others at the PeopleSoft Info Portal.

learn more at **ORACLE** PeopleSoft Information Portal

and

Be a PeopleSoft Innovator...

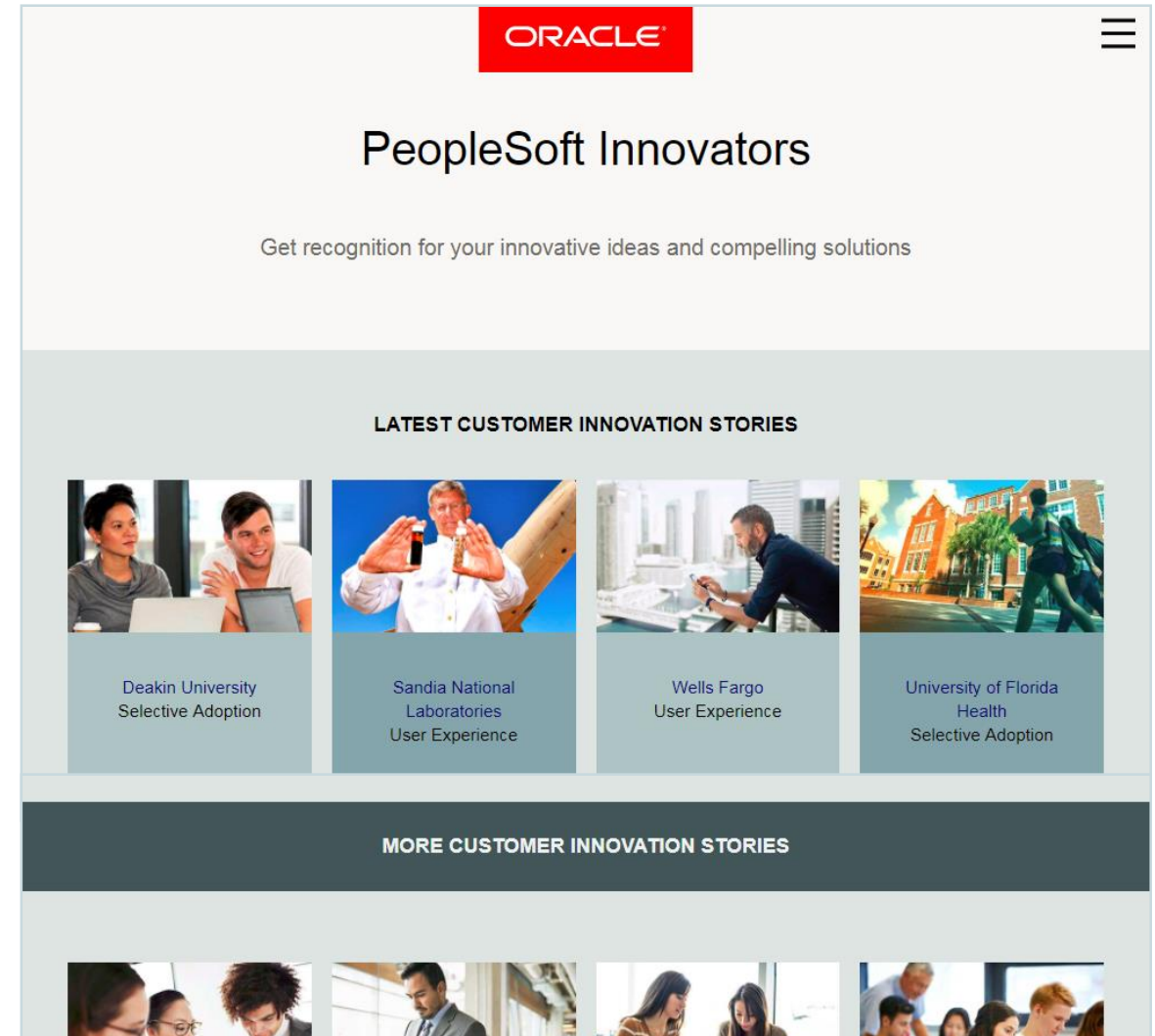


Recognizing Customer Innovation

PeopleSoft Innovators – So Far...



Be a PeopleSoft Innovator...



ORACLE

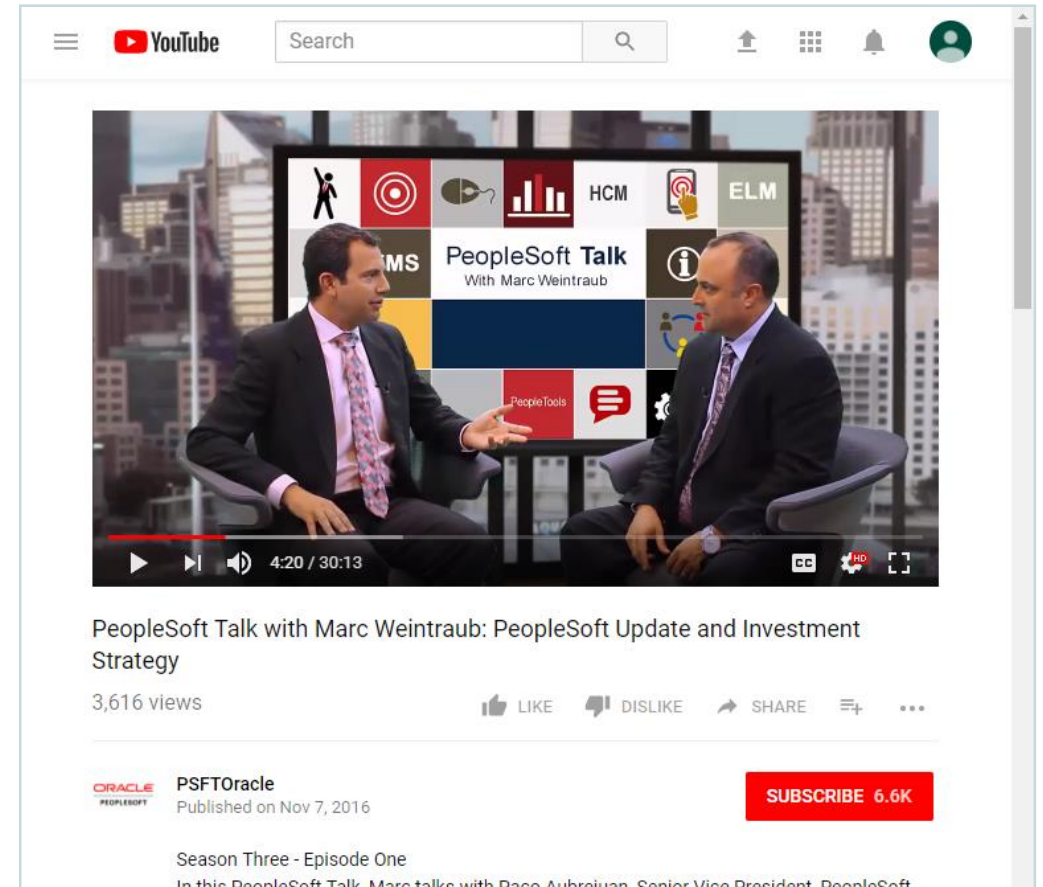
Communicating Directly to Customers

PeopleSoft Information Portal, YouTube Channel, and More

*click images
to launch*



PeopleSoft Information Portal



PeopleSoft YouTube Channel

The Community Must Include Oracle Sales

Oracle's Applications License Sales Teams for PeopleSoft

- New Oracle team to support EMEA sales
- Expansions of existing PeopleSoft installs
- New purchases of PeopleSoft
- Sales Consulting support
- Supporting partner reselling

ORACLE®
Sales



Contact the Oracle License Sales Team

oracle.com/peoplesoftsales

Major Initiatives

The Focus of Ongoing Investment



Simple, Intuitive, Mobile User Experience



Agile Innovation of Business Functions



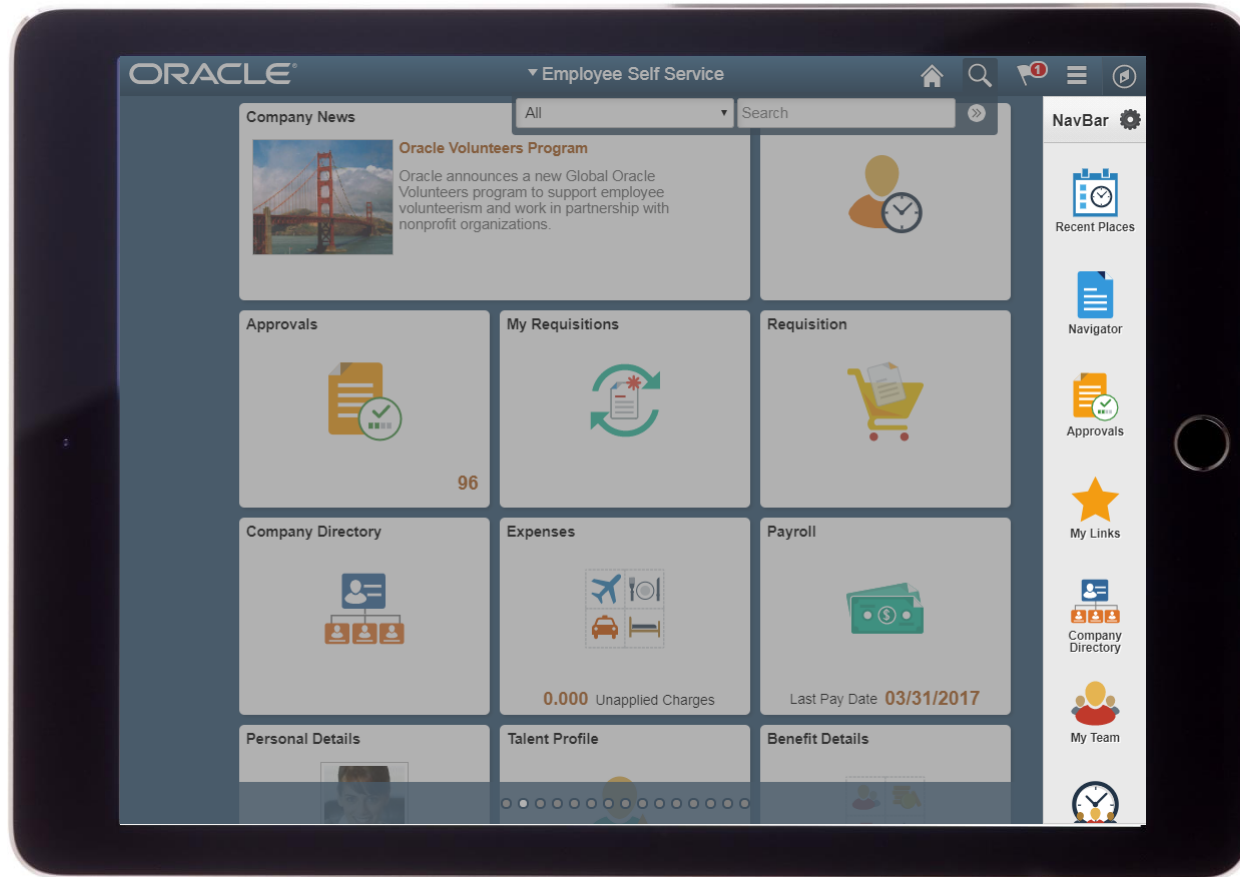
Tailored Solutions at Lower Costs



Low Cost, Responsive Development Operations

Focus on User Experience

PeopleSoft Roadmap and Strategy for User Experience



- More than “look and feel”, it’s how you and PeopleSoft interact.
- Includes navigation, search, personalization, and information delivery.
- Mobility and transaction redesign with Fluid UI when and where needed.
- “Classic Plus” to standardize page styling where Fluid UI is a lower priority.

One Consistent UI Throughout!

What Does Classic Plus Look Like?

Decomposing the Changes with Classic Plus

New Layout of Headers

New Styling of Tabs

New Shading, Coloring of Buttons

Updates Grid Controls

Change in Spacing

Standardization of Coloring

Accumulator Period	Entitlement Element	Element Name	Amount	From	Through
Year to Date	KOWAE SICK	KOWAE SICK_BAL	44.307696	01/01/2017	12/31/2017
Year to Date	KOWAE VAC	KOWAE VAC_BAL	543.076887	01/01/2017	12/31/2017
Calendar Period	KOWAE FMLA	KOWAE FMLA_BAL	0.000000	05/28/2017	06/10/2017
Calendar Period	KOWAE MILCG	KOWAE MILCG_BAL	0.000000	05/28/2017	06/10/2017
Calendar Period	KOWAE MILEX	KOWAE MILEX_BAL	0.000000	05/28/2017	06/10/2017
Year to Date	KOWLD VAC	KOWLD VAC_BAL	0.000000	01/01/2017	12/31/2017
Year to Date	KOWLD SCKDON	KOWLD SCKDON_BAL	0.000000	01/01/2017	12/31/2017
Year to Date	KOWLD SCKRCV	KOWLD SCKRCV_BAL	0.000000	01/01/2017	12/31/2017
Year to Date	KOWLD SCKRET	KOWLD SCKRET_BAL	0.000000	01/01/2017	12/31/2017
Year to Date	KOWLD VACDON	KOWLD VACDON_BAL	0.000000	01/01/2017	12/31/2017

One User Experience, Two Powerful Technologies

How PeopleSoft Delivers Capabilities

FLUID UI

CLASSIC PLUS

New Features

Existing Capabilities

Mobility Needed

Power Usage

High Frequency

Many, Casual Users

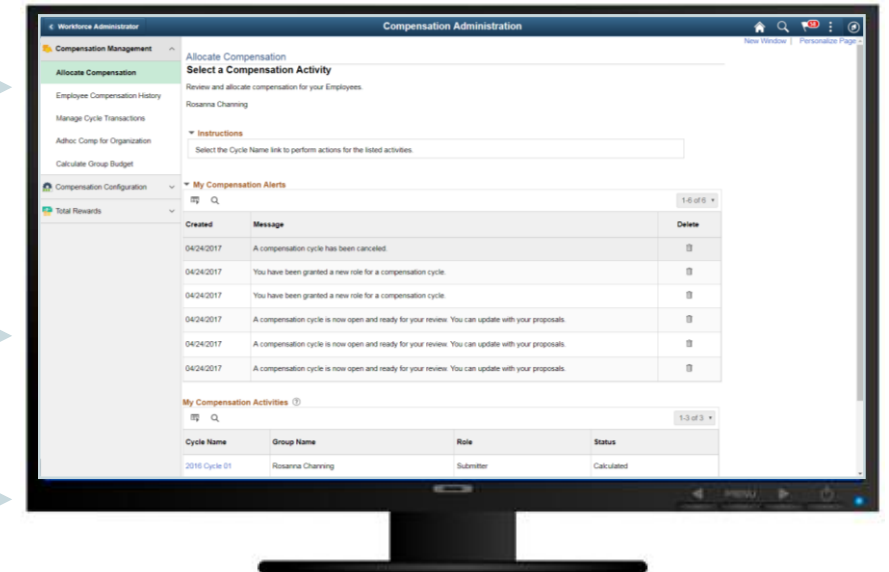
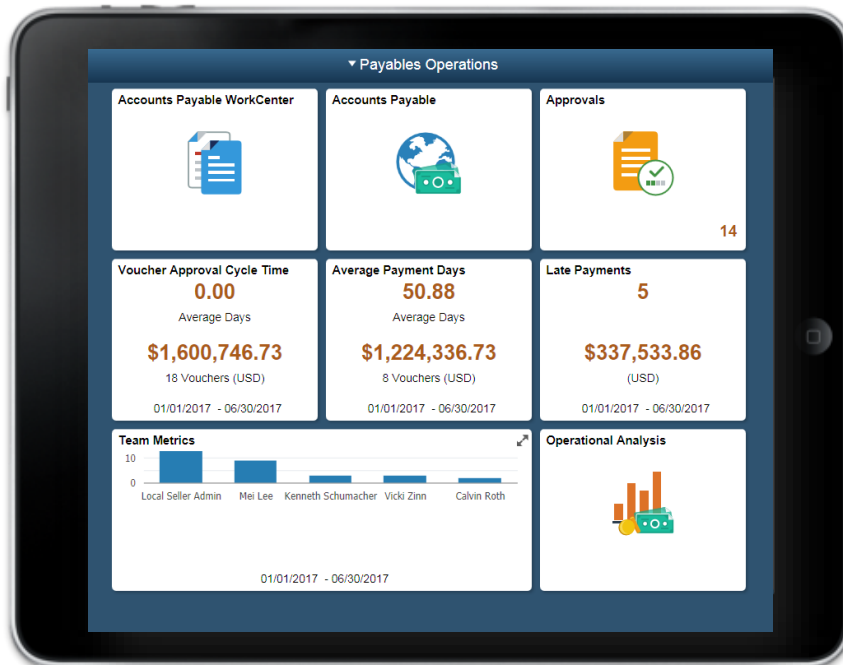
Limited Usage

Personalizable

Configurable

On Roadmap

Long Term Support



Getting to Classic Plus

Delivered via the Applications; Enabled by PeopleTools

From This...

Workforce Administrator Calculate Absence and Payroll

Calculate Absence and Payroll

Run Control ID test Report Manager Process Monitor Run

Payroll / Absence Run ?

*Calendar Group ID K0 2017M09 K0 2017M09 Open

Stream Number Process Number

Group List ID Language English

Processing Phases and Options ?

☒ Identify ☒ Calculate ☐ Freeze ☐ Finalize

☐ Un-freeze ☐ Suspend ☐ Cancel

☐ Suspend Active

☐ Identified

Restart Information

Save Notify

...To This

Workforce Administrator Calculate Absence and Payroll

Calculate Absence and Payroll

Run Control ID TEST Report Manager Process Monitor Run

Payroll / Absence Run ?

*Calendar Group ID K0 2017M09 K0 2017M09 Open

Stream Number Process Number

Group List ID Language English

Processing Phases and Options ?

☒ Identify ☒ Calculate ☐ Freeze ☐ Finalize

☐ Un-freeze ☐ Suspend ☐ Cancel

☐ Suspend Active

☐ Identified

Restart Information

Debug and Tuning Options

Save Return to Search Notify Add Update/Display

Classic Plus

- Enabled by PeopleTools 8.56.
- Initial applications uptake delivered in Update Images:
 - HCM PI 24 (Oct '17)
 - FSCM PI 26 (Dec '17)
- On by default but controllable at global and component level.
- Classic pages still work.
- Continued development of Fluid UI pages where appropriate.
- Great feedback from early customers.

Focus on New Features

PeopleSoft Roadmap and Strategy for New Features

**INTUITIVE
EXPERIENCE**

**REUSABLE
FRAMEWORKS**

**HIGHLY
CONFIGURABLE**

**EASILY
CONSUMABLE**

**ANALYSIS
& INSIGHT**

**COMPELLING
VALUE**

Focus on Tailored Solutions at Lower Costs

Reduce Time to Value and Costs with Greater Configuration **NOT** Customization

UI PERSONALIZATION

PAGE & FIELD
CONFIGURATOR

FORMS AND APPROVAL
BUILDER

FEATURE-SPECIFIC
PREFERENCES

BRANDING
FRAMEWORK

APPROVALS PAGE
COMPOSER

EVENT MAPPING

APPLICATION DATA SETS

AND MORE...

Ongoing Investment

PeopleSoft Roadmap for Applications Technology

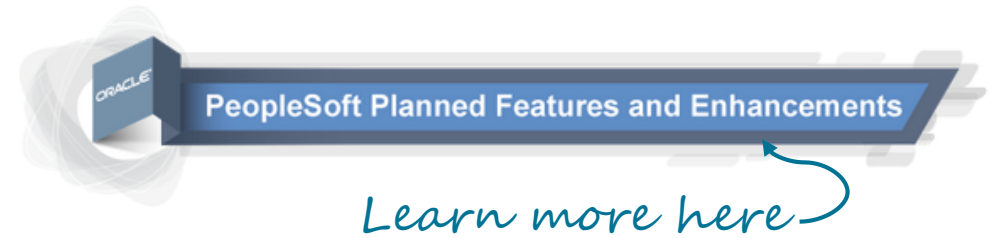
- Expand Capabilities to Help Minimize Customizations
Embedded Related Content
- Enhancements to Search Framework and Elasticsearch
Multi-facet Select
- Additional Fluid UI Features
Configurable Live Tiles
Master-Detail Notification Page
- Enhancements to Information Delivery
Unified Related Information Pane
Pivot Grid Enhancements
- Further Streamlining of Lifecycle Management
- Core PeopleTools Investments (AppDesigner, Security, Integration Broker, etc)



PeopleTools Releases Planned for Delivery Every 12 – 18 Months

Ongoing Investment

PeopleSoft Roadmap for Applications



HCM

- Day One Boarding / Off Boarding
- Compensation History
- Data Privacy Framework
- Core HR Simplified Analytics
- Paysheet Update Processing for Terminated Employees
- Mobile/Redesigned Benefits Open Enrollment
- Absence Management WorkCenter
- Company Directory User Experience Enhancements
- Modernization of Position Management, Job Data, Personal Data
- HelpDesk for Human Resources Enhancements
- Ongoing Legislative/Regulatory Updates

Financials

- Simplified Journal Entry
- Additional Financial Analytics
- Match Exception Collaboration
- Payment Plans for Accounts Receivable
- Period Close Productivity Expansion

Procurement

- Sourcing Event and Bidder Invitation Enhancements
- Supplier Scorecard Objective KPI's
- Review Supplier Registration and Change Requests
- eProcurement Mobile Receiving

Projects (ESA) / ALM

- Asset Management Self Service
- Expenses – Mileage GPS Integration

New Features Planned for Delivery Multiple Times a Year

Ongoing Investment

Published PeopleSoft Roadmap is the Planned Features and Enhancements Page

☆ PeopleSoft Planned Features and Enhancements (Doc ID 1966243.2)

To Bottom



PeopleSoft Planned Features and Enhancements

Technology

HCM

FSCM

Campus Solutions

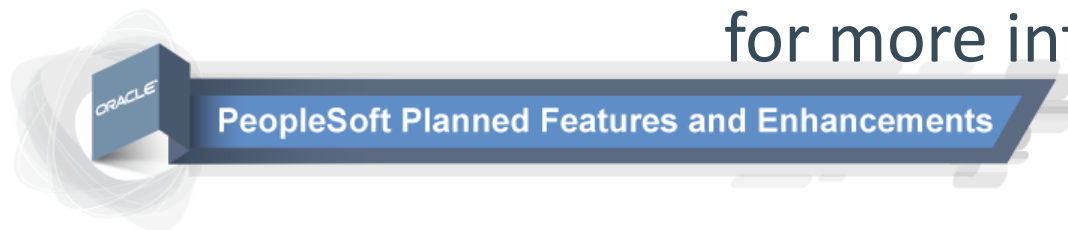
Search This Document

Print

See Oracle Support
for more information

ORACLE®
My Oracle Support

click me



With PeopleSoft Selective Adoption and its continuous delivery model, PeopleSoft will deliver new enhancements as soon as they are built, and customers apply them the same way that they apply fixes. This will allow customers to select the features and enhancements that benefit their business as soon as they are available. New features and enhancements are delivered throughout the year in PeopleSoft Update Images. These update images contain new features and enhancements as well as fixes needed to maintain your PeopleSoft environment. In addition, PeopleTools continues to innovate and release new features and enhancements in classic releases.

This information center provides a high-level view of planned new features and enhancements for the PeopleSoft product line. The content found on this site replaces the content that was previously published in our Release Value Propositions, PeopleSoft Pre-Release Notes, and the PeopleSoft Statement of Direction. The features and enhancements listed in this site, are planned to be delivered through PeopleSoft Update Images within the next 12 to 18 months. Each time an Update Image is released, we will update this site with the new features planned for the subsequent Update Images. In other words, this site will be continuously updated to reflect the latest upcoming planned new features and enhancements. New features and enhancements to the PeopleTools product line will also be listed on this site. Once the feature has been delivered, it will be removed from this page and added to your pillar's Feature Overview document and the [Cumulative Feature Overview Tool](#), available on the PeopleSoft Update Manager home page.

This information center is broken down by application suite. Features and enhancements for PeopleSoft ELM and CRM are grouped with the PeopleSoft HCM content. To find a specific feature by name, use the "Search this Document" field on the top of the page.

DISCLAIMER:

THIS DOCUMENT IN ANY FORM, SOFTWARE OR PRINTED MATTER, CONTAINS PROPRIETARY INFORMATION THAT IS THE EXCLUSIVE PROPERTY OF ORACLE. YOUR ACCESS TO AND USE OF THIS CONFIDENTIAL MATERIAL IS SUBJECT TO THE TERMS AND CONDITIONS OF YOUR ORACLE SOFTWARE LICENSE AND SERVICE AGREEMENT, WHICH HAS BEEN EXECUTED AND WITH WHICH YOU AGREE TO COMPLY. THIS DOCUMENT AND INFORMATION CONTAINED HEREIN MAY NOT BE DISCLOSED, COPIED, REPRODUCED OR DISTRIBUTED TO ANYONE OUTSIDE ORACLE WITHOUT PRIOR WRITTEN CONSENT OF ORACLE. THIS DOCUMENT IS NOT PART OF YOUR LICENSE AGREEMENT NOR CAN IT BE INCORPORATED INTO ANY CONTRACTUAL AGREEMENT WITH ORACLE OR ITS SUBSIDIARIES OR AFFILIATES.

THIS DOCUMENT IS FOR INFORMATIONAL PURPOSES ONLY AND IS INTENDED SOLELY TO ASSIST YOU IN PLANNING FOR THE IMPLEMENTATION AND UPGRADE OF THE PRODUCT FEATURES DESCRIBED. IT IS NOT A COMMITMENT TO DELIVER ANY MATERIAL, CODE, OR FUNCTIONALITY, AND SHOULD NOT BE RELIED UPON IN MAKING PURCHASING DECISIONS. THE DEVELOPMENT, RELEASE, AND TIMING OF ANY FEATURES OR FUNCTIONALITY DESCRIBED IN THIS DOCUMENT REMAINS AT THE SOLE DISCRETION OF ORACLE.

DUE TO THE NATURE OF THE PRODUCT ARCHITECTURE, IT MAY NOT BE POSSIBLE TO SAFELY INCLUDE ALL FEATURES DESCRIBED IN THIS DOCUMENT WITHOUT RISKING SIGNIFICANT DESTABILIZATION OF THE CODE.

A Value Driven Product Investment Strategy

Enabling customer success by delivering value is paramount to Oracle. As a PeopleSoft Human Capital Management (HCM) and/or a PeopleSoft Financials and Supply Chain Management customer or prospect, you expect your enterprise application to deliver value to your organization. While your specific drivers may be different, common customer objectives include:

- Effectively execute in the face of complexity

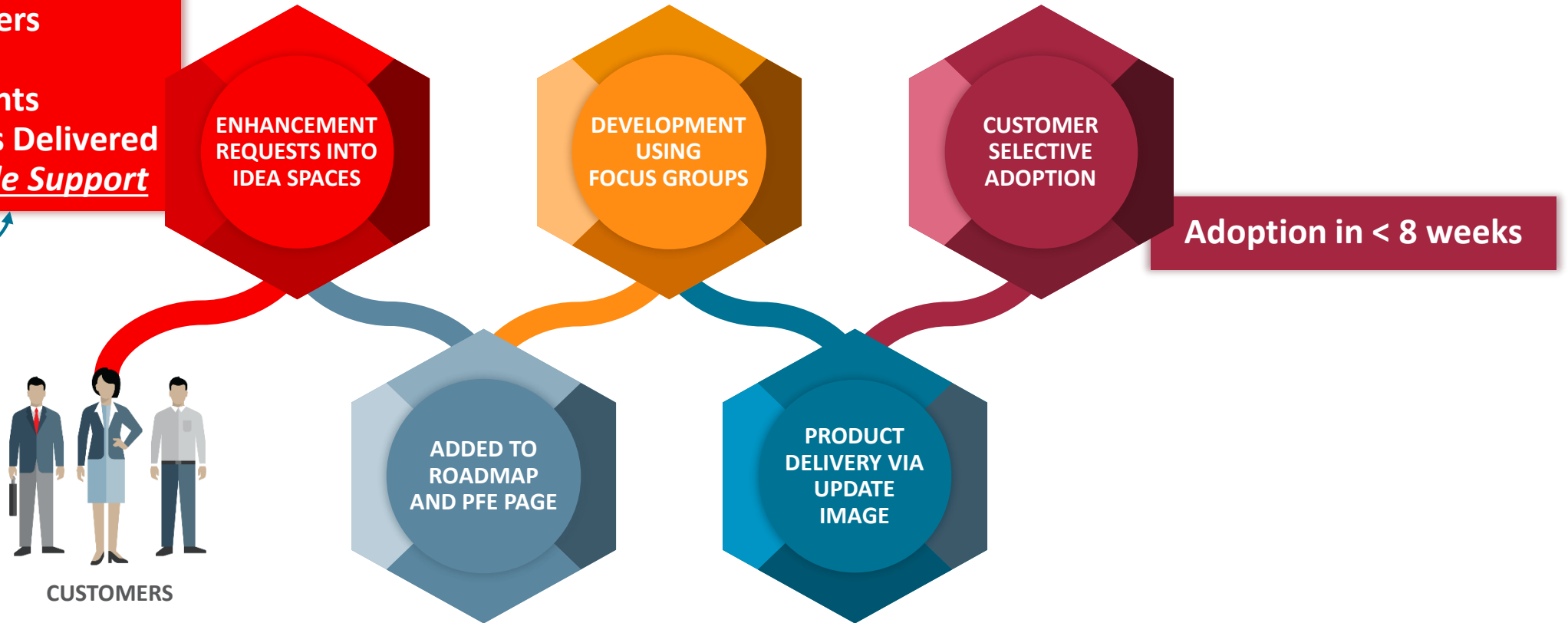


Your Input Drives Us

Customer Driven, Rapid Innovation Cycles

- 15K+ Followers
- 2K+ Ideas
- 3K+ Comments
- 75+ Features Delivered
- On My Oracle Support

click me →



Idea to Impact in Months Not Years

The Next Big Thing

Emerging Technologies



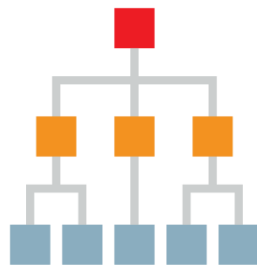
Chatbots



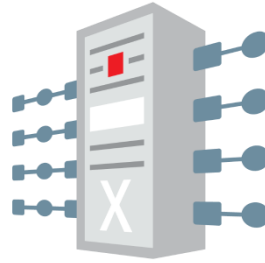
Machine Learning



Natural Language
Processing



Blockchain



Recommendations



Artificial Intelligence

- Value Additive
- Targeted
- Secure
- Mobile
- Auditable
- Contextual

Investigation Phase

How to Think About the Cloud as a PeopleSoft Customer

Recommended Steps for Us to Work Together on Your Journey



1) Focus on your desired business outcomes.



2) Get educated about Oracle's Cloud solutions.



3) Consider the multiple paths on your journey to the cloud.

Many Paths

Driven by Your Objectives; Not Always Mutually Exclusive



Maximize the Value of Your
Investment in PeopleSoft



Shift PeopleSoft to Oracle
Cloud (IaaS/PaaS)



Adopt Oracle Cloud
Applications (SaaS)

We've Come a Long Way Together

A Look Back and a Look Forward

- Set the Applications Unlimited strategy back in 2006.
- Oracle continues to deliver on its commitments and more.
- Advancements in PeopleSoft have protected your investment.
- We are in this together; your success is our success.



ORACLE®